

SECOND CRUISE OF THE
"Mighty Mac"

U. S. S. MOUNT McKINLEY

Occupation of Japan
September 1945 to November 1945




RECEIVED

MAY 9 1960

NAVY DEPARTMENT LIBRARY

Spec.
Coll.
D
774
.M676
543
1946

SOURCE INFORMATION

Image url: <https://www.fold3.com/image/301703514>
Publication Title: U.S. Navy Cruise Books, 1918-2009
Content Source: Navy Department Library
Fold3 Publication Year: 2012
Fold3 Job: 12-037
Language: English
Country: United States
Short Description: U.S. Navy cruise books for various years and ships, 1918 to 2009.
Ship: USS Mount McKinley
Ship Classification: AGC-7
Year Range: 1946
Original data from:  [Navy Department Library \(http://www.history.navy.mil/library/index.htm\)](http://www.history.navy.mil/library/index.htm)

Sasebo



Japanese Officers and Captain E. G. Fullinwider, U. S. N., Chief of Staff, PhibGroup FOUR, gathered in Admiral's cabin for Surrender Conference.

Japanese harbor pilot directing entry into Sasebo Harbor.



Surrender Conference in Admiral's Cabin - L. to R. Major General Kogo, Japanese Army - Vice Chief of Staff of Western Army District; Vice Admiral Kosa Abe, Com. of Sasebo Naval Base and Com. of Naval Ground Forces in Sasebo Area; Ensign Tanaka, Imperial Jap Navy - Interpreter; Captain E. G. Fullinwider, U. S. Navy, Chief of Staff,

Former Japanese Naval Academy occupied by Fifth Amphibious Corps Headquarters, Sasebo.



Ammunition storage caves in hill at entrance to Haiki Straits.

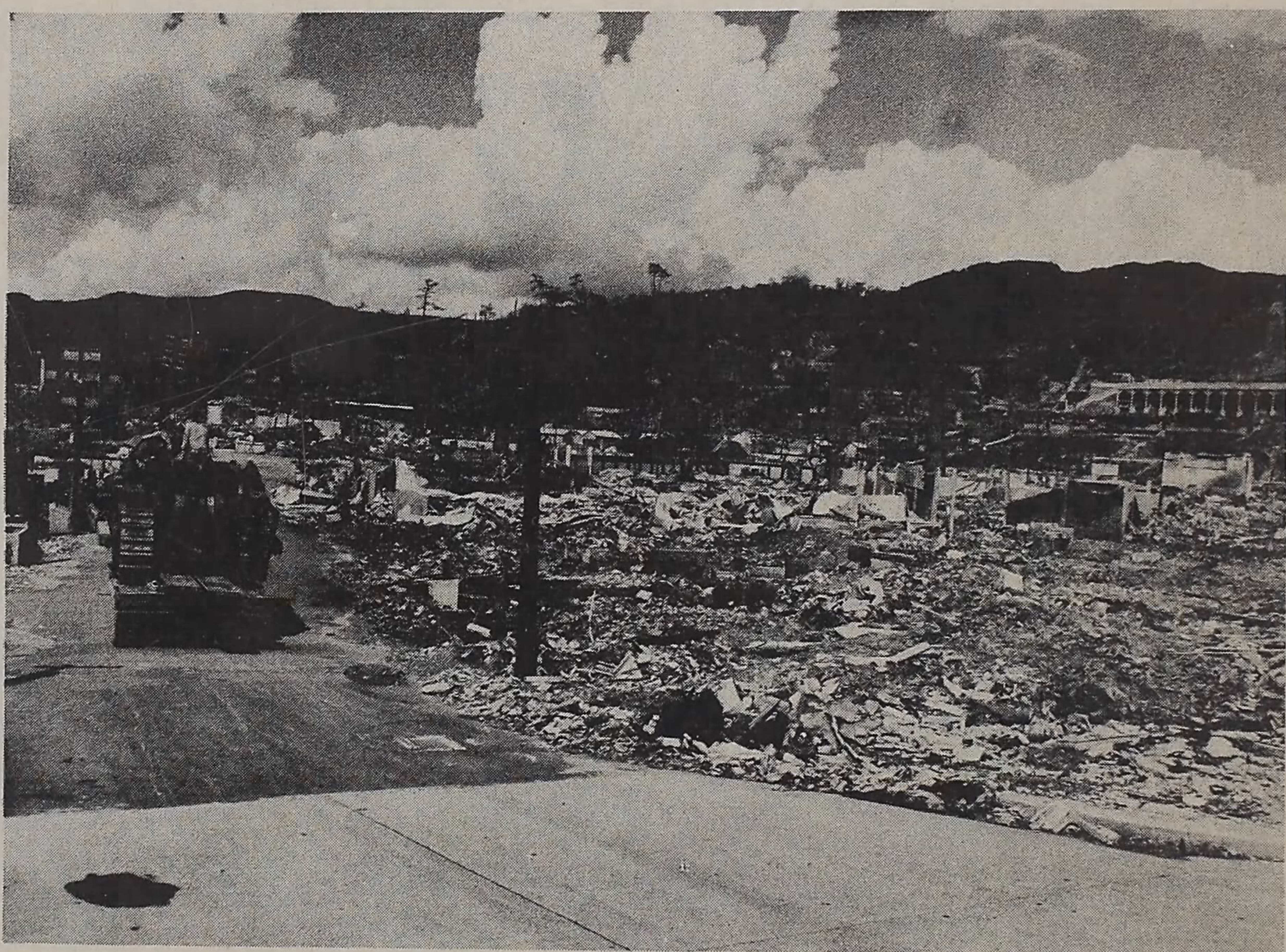


Peter D. Gales, PhoM1c, USNR covering bomb damage in Sasebo City, Kyushu, Japan.



Street scene in the city of Sasebo.

View of bomb damage to business district in Sasebo.



Coolie hauling household effects through bombed district.

Scene of typical fishing village in Sasebo Area.

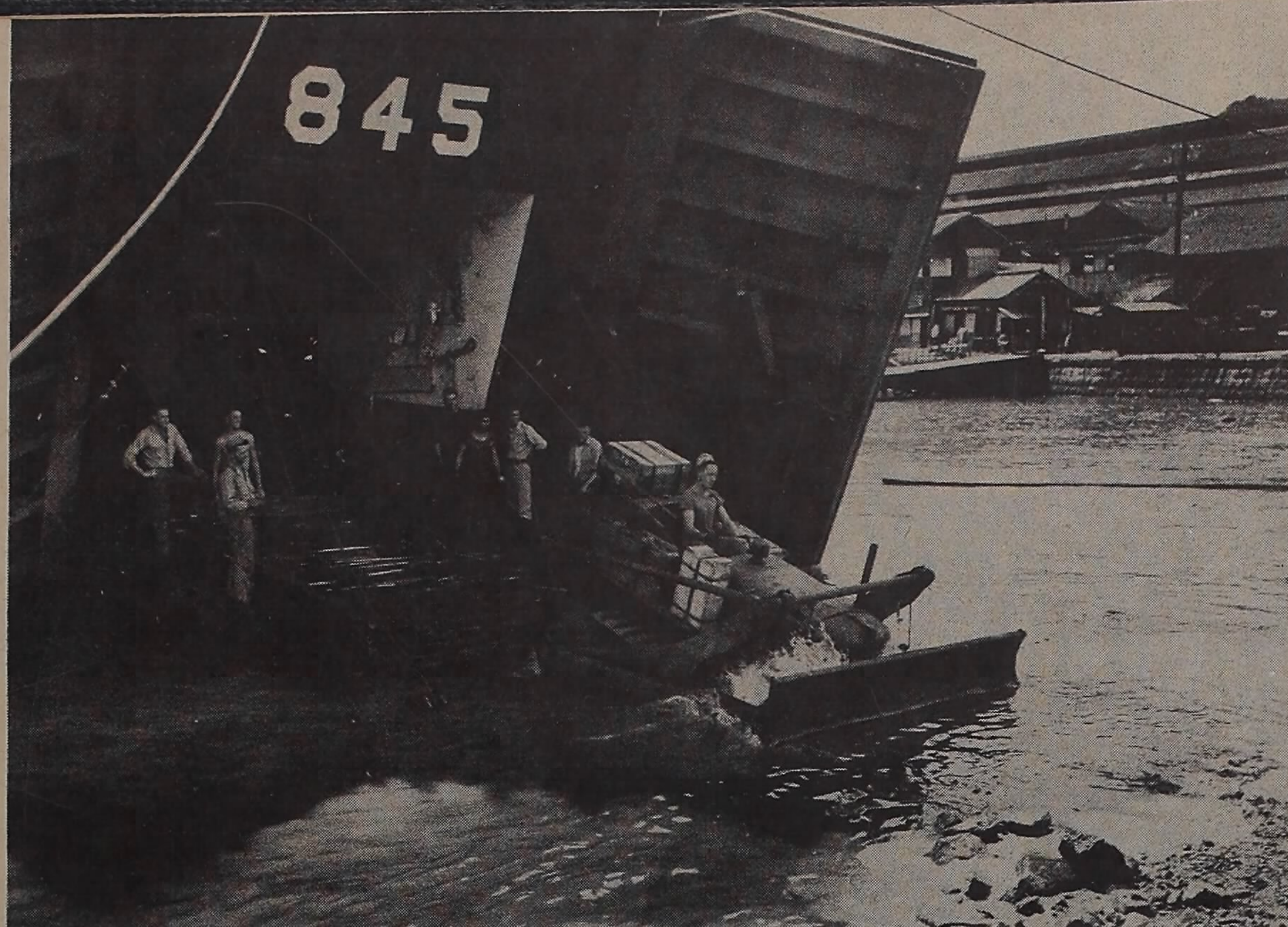


LSM and LST's unloading on ramp at Naval Aircraft Factory.



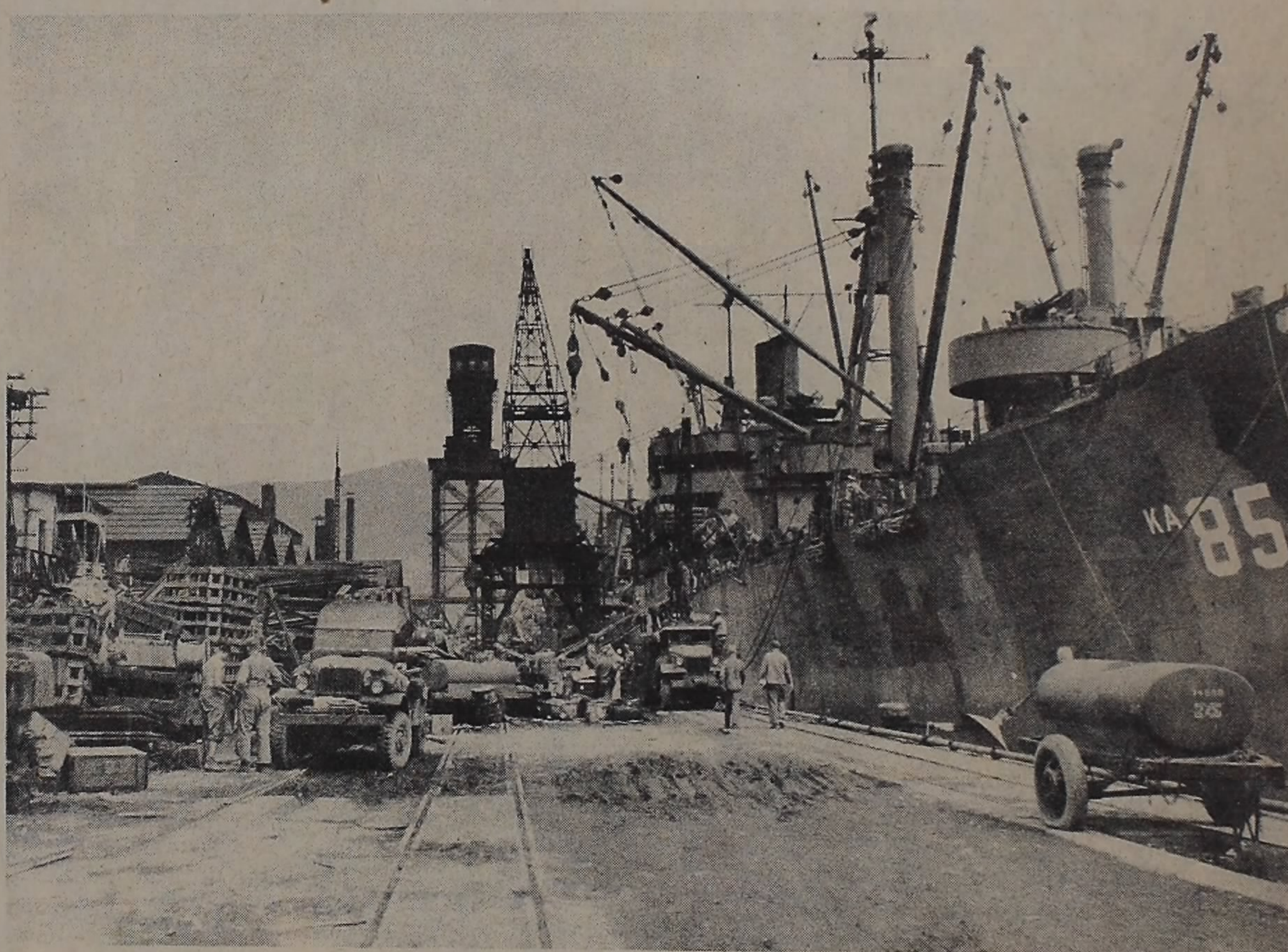
LST beached at ramp at Supply Basin.





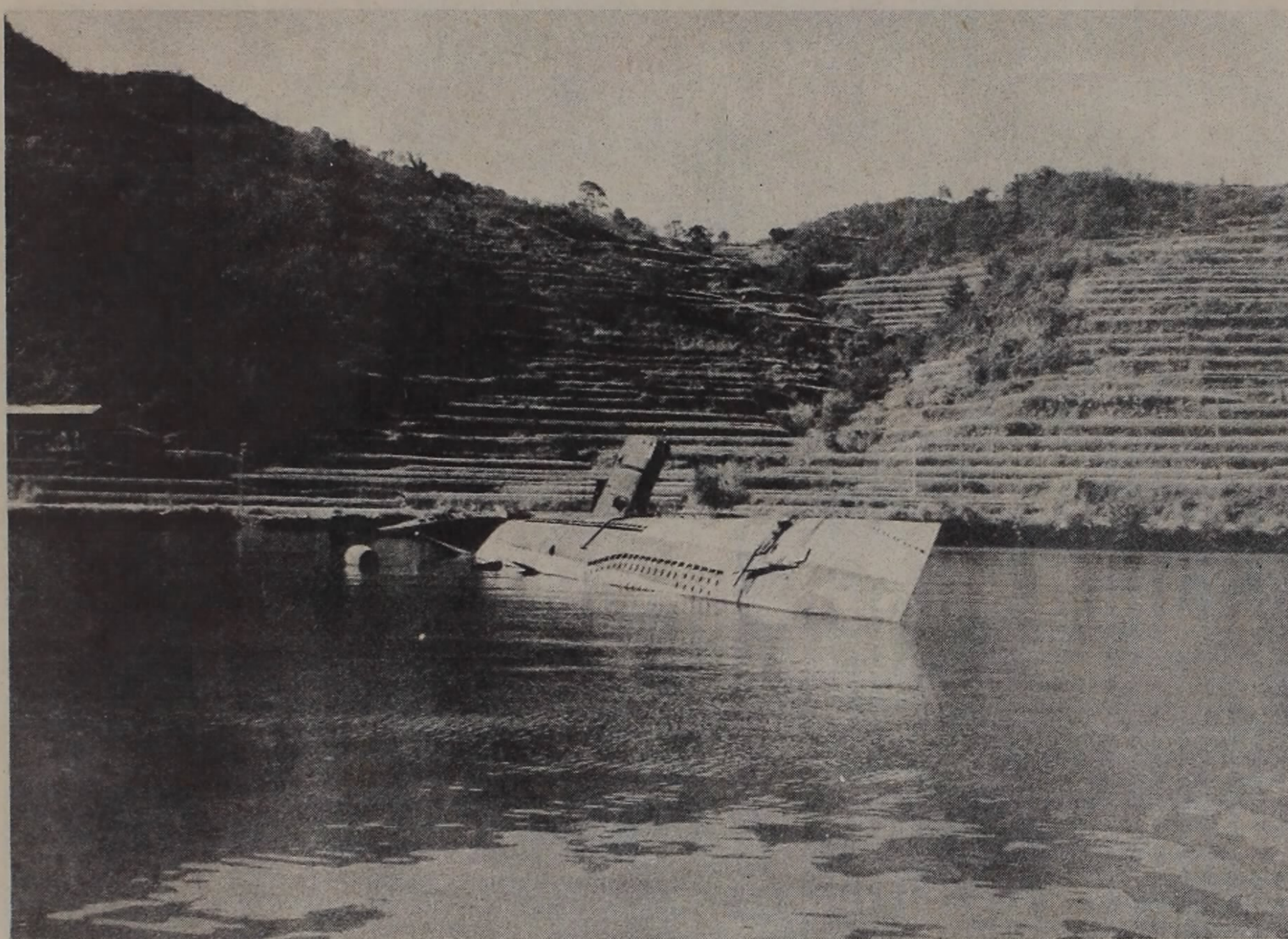
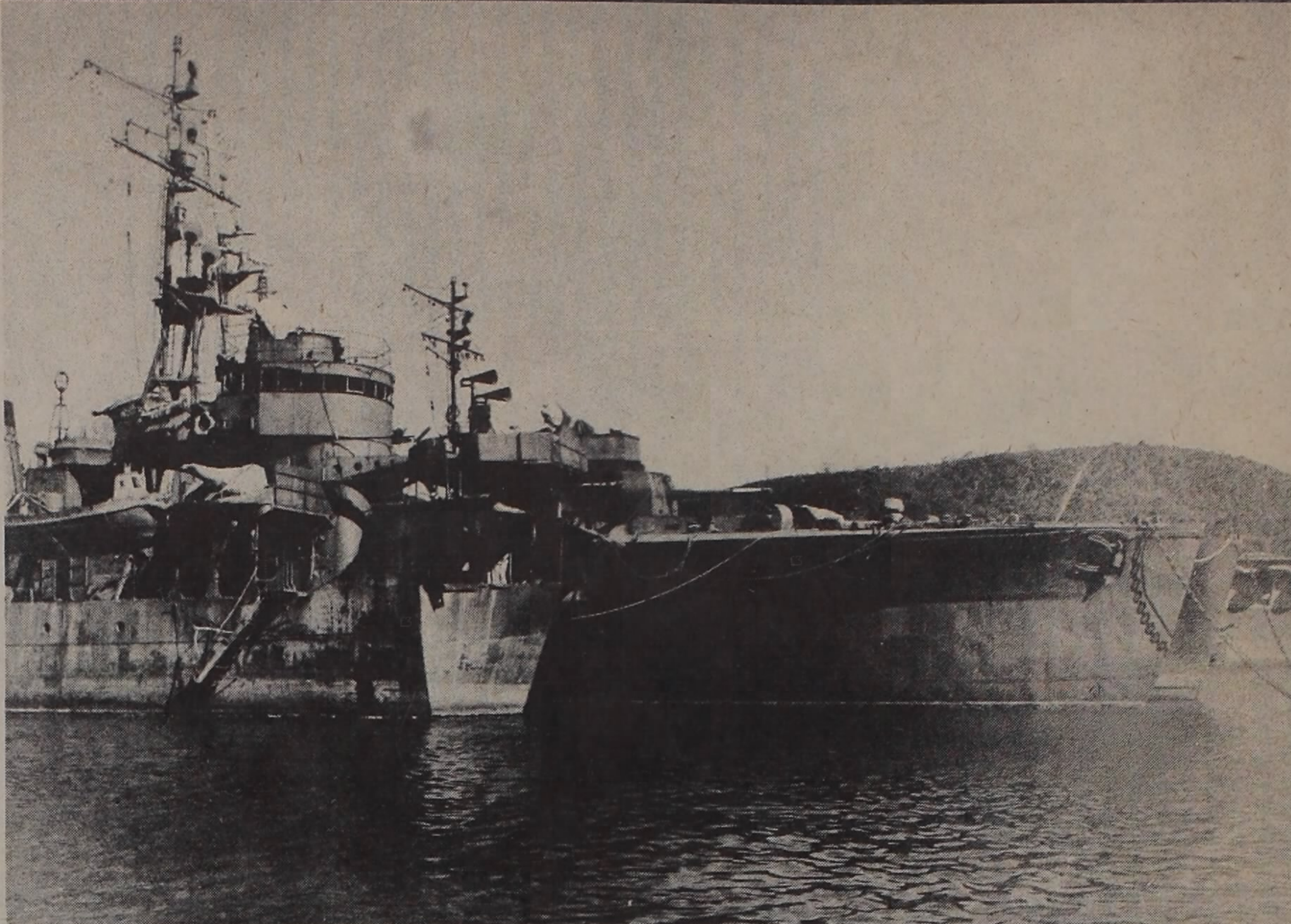
Bulldozer on ramp of LST at Supply Basin.

KA's unloading at Repair Basin Docks.



LST preparing to unload supplies at Basin.

Japanese destroyers - SUZUBUKI in foreground with bow missing, HARUKAZE and YANAGI in Ebisu Bay, Sasebo.



Scuttled Japanese coastal submarine in Ebisu Bay.

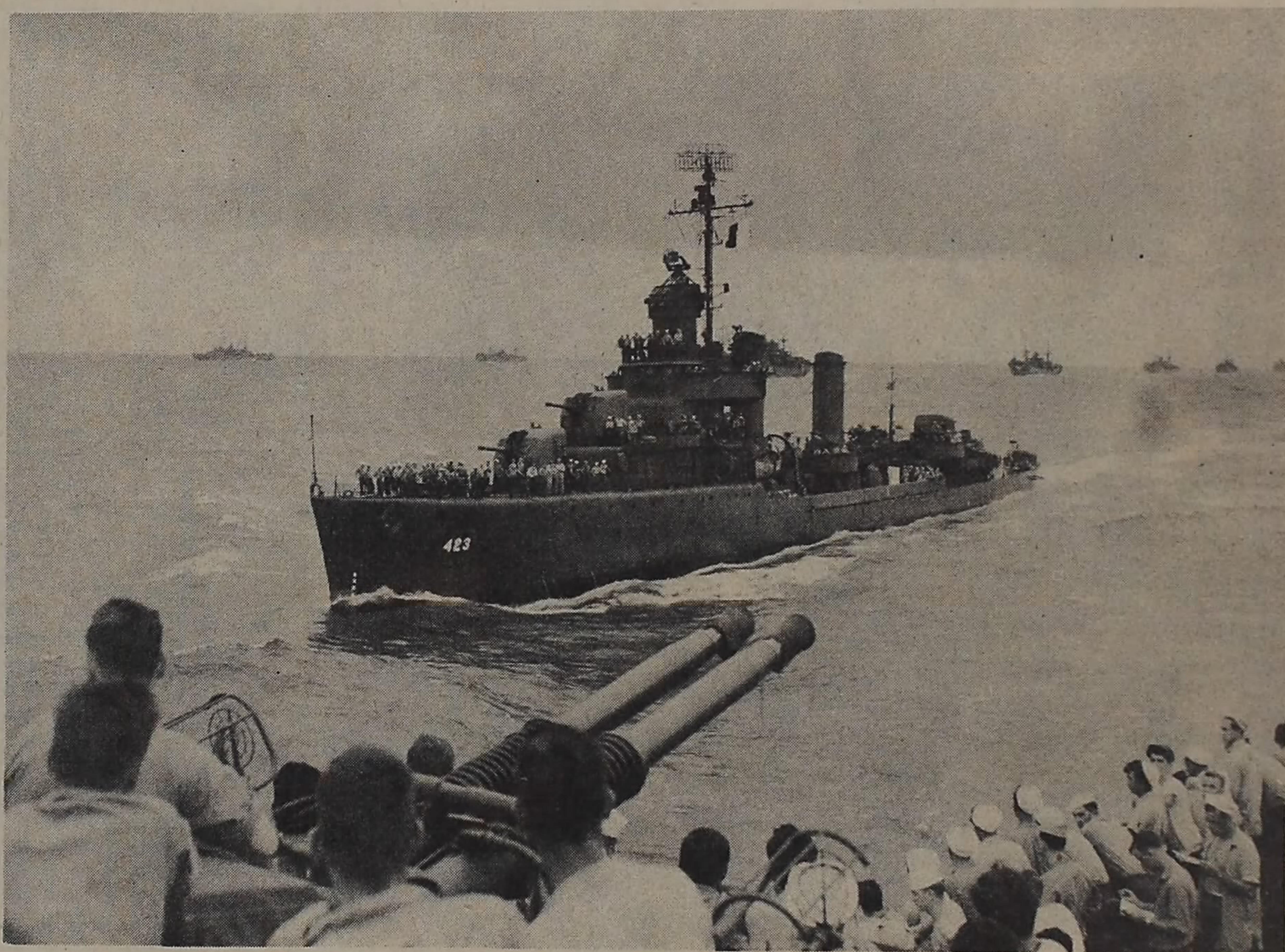
Front view of Japanese destroyers, SUZUBUKI, HARUKAZE and YANAGI.





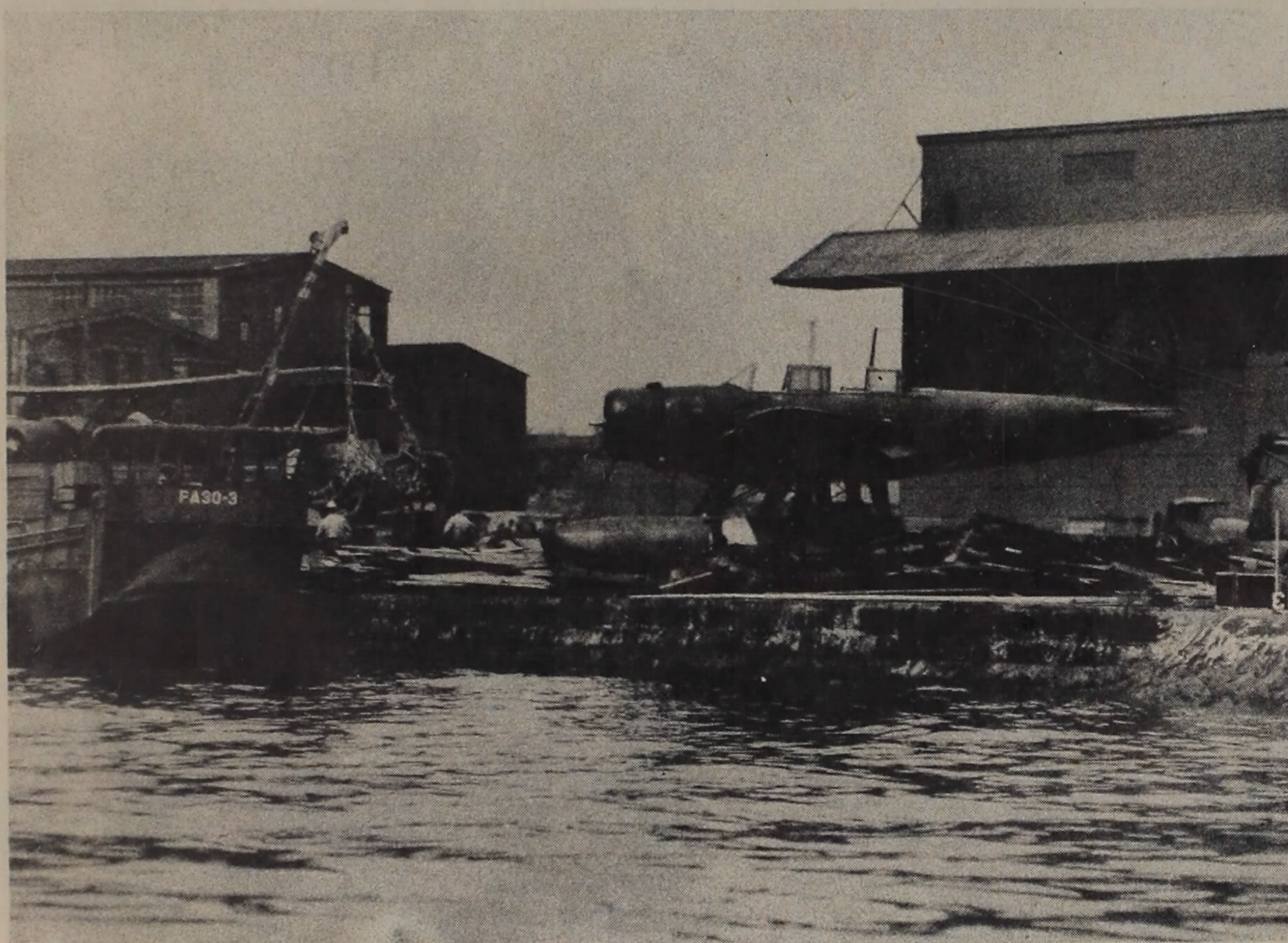
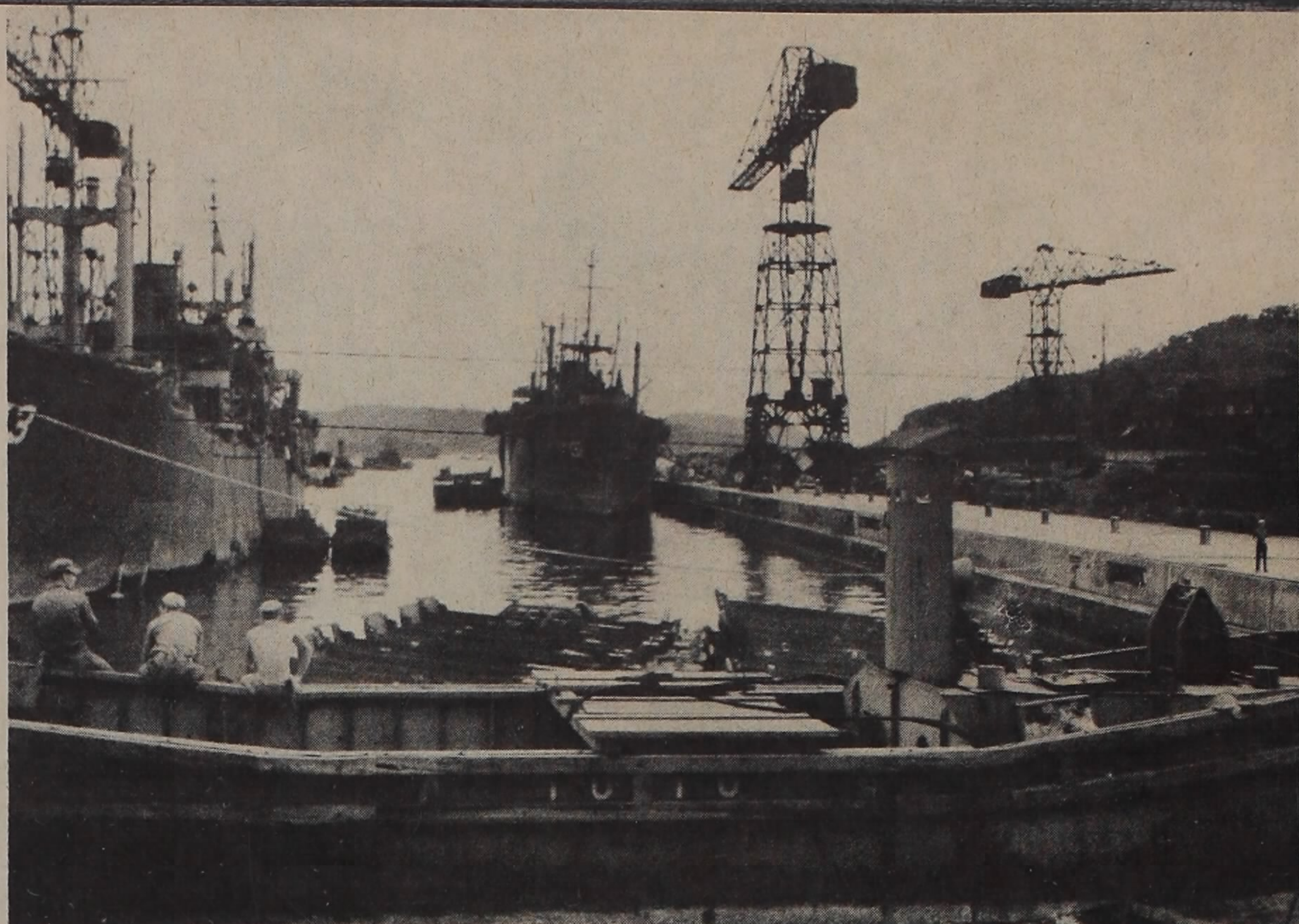
**Japanese PF-Frigates (Kaibokan Class)
moored in Ebisu Bay.**

**U. S. Destroyer coming alongside the
"Mighty Mac" to receive officers.**



**Japanese aircraft carrier KASAGI in
Ebisu Bay.**

U. S. ships unloading supplies in Drydock No. 4, Sasebo Harbor.



Jap seaplane on dock near Japanese Naval Aircraft Factory.

Japanese aircraft carrier JUNYO in Ebisu Bay.

