

N-14361

3431

██████████
DECLASSIFIED

NAVY
MARINE
DIVISION
AINOURA NAVAL RECRUIT TRAINING

*Reviewed and analyzed by Nuno Del 3 May 78
of Declassify.com IT records
1 Sep 77*

Instructors Reading this Document

Date

██████████

DECLASSIFIED

██████████
██████████

64 SEP 1946

No Copy #



ATION

 **A-14361-A**
DECLASSIFIED

G-2 SECTION
HEADQUARTERS,
5TH MARINE DIV-
ISION C/O FLEET
POST OFFICE,
SAN FRANCIS-
CO.

13 OCTOBER, 1945

G-2 MEMORANDUM

NUMBER 98-45:

AINOURA

NAVAL

RECRUIT

TRAINING

STATION

PRIOR TO

OCCUPATION

CONTENTS

WRITTEN REPORT

PHOTOGRAPHS

MAPS

~~CONFIDENTIAL~~


DECLASSIFIED

DECLASSIFIED

G-2 SECTION
HEADQUARTERS, 5TH MARINE DIVISION
C/O FLEET POST OFFICE, SAN FRANCISCO

G-2 MEMORANDUM No. 98-45: ACoFS, G-2, 5th MARINE DIVISION

HISTORY-GEOGRAPHY

The AINOURA NAVAL RECRUIT TRAINING STATION 129° 38' E 33° 10' 15" W, is located on the west coast of KYUSHU, three and a half miles west of SASEBO on the AINOURA river mouth. The "Number Two SASEBO Naval Barracks" was opened on 20 November, 1941 and had its official name changed to "AINOURA NAVAL RECRUIT TRAINING STATION" (KAIHEIDAN), in 1944.

DESCRIPTION

The training station is situated on a peninsular area, with the main building area in the low flat, AINOURA River valley. Its southern coast has a seawall which continues around on the eastern AINOURA River boundary. The western and northern areas behind the buildings are rugged hills to the very indented coastline which affords many ship and boat anchorages and refuges.

The soil is predominately clay which in wet weather makes all areas difficult for wheeled vehicles to negotiate.

The majority of the buildings are of wood construction with only a few of brick.

All roofs are of heavy wood truss construction with tile roofing.

All buildings are provided with electric illumination which is unstable in a mild wind or rain storm due to the inadequate poles and wiring methods used.

Originally, all buildings were heated in cold weather. The hospital and sick barracks, having the best with steam heat. Bath houses were heated by the water used, and kitchens by the heat escaped from cooking.

All barracks and administration buildings were heated by coal and charcoal stoves.

-2-

DECLASSIFIED

DECLASSIFIED

G-2 MEMORANDUM No. 98-45: ACoF3, G-2, 5TH MARINE DIVISION

These stoves were scrapped (about Sept. 1944) to the war scrap iron program and body heat only became fashionable thereafter.

After the scrap drive, officer's private rooms and the main administration building were heated by individual porcelain charcoal fire pots.

All buildings had their uppermost ceilings removed to facilitate the locating and extinguishing of enemy fire bombs.

Barracks #22 and #23 had a capacity of 1200 men each, the others housed 880 men, with the smallest housing 500. Bunking was provided by hanging hammocks approximately 3' apart on the main floors and mats on the balconies.

Buildings No. 1 in addition to sheltering vehicles, were used as lumber and cement storehouses.

The hospital, (building No. 16) was not adequate for the 13000 -15000 men of the station. It contained good Japanese equipment and was kept scrupulously clean by Japanese standards.

The lecture hall for arms (bldg. #28) was used for instruction and demonstration in the use of naval arms. It contained the following:

- 25 projectiles and sections of projectiles
- 1 large blinker light
- 1 large search light
- 1 heavy machine gun on wood A.A. mount.
- 1 torpedo head section in glass case.
- 1 torpedo half section in glass case.
- 2 torpedos half section on wood pedestals.
- 2 torpedos on wood pedestals.
- 5 boxes miscellaneous spare parts
- 2 propellers and motor shafts
- 1 large navigation instrument
- 4 tool chests
- 2 miniature propellor shafts
- 2 cylindrical sea mines

DECLASSIFIED

DECLASSIFIED

G-2 MEMORANDUM No. 98-45: ACoFS, G-2, 5TH MARINE DIVISION

5 ship models, including one DD, 1 CL, 1 CA, 1 BB
1 thirty foot model of righting ship
1 eight foot model of fighting ship with electrical controls.
1 green and red signal light
3 knot display boards
1 cabinet of pulleys, chains, ladders, anchors and cables

The garage (building #30) housed the following vehicles:

3 passenger cars
9 trucks
1 auto tricycle
2 side cars
1 fire extinguisher
1 watering car
1 crane

Buildings number 66-67-68-69-69A were originally erected as airplane hangers but were used as warehouses and classrooms.

Number 66 was used for instruction in weapons and contained:

2, 15 cm. trench mortars
18, 8 cm. trench mortars
12, 20 cm. rocket guns
15, 8 cm. rocket guns
8 machine guns
940 small arms.
920 accessory sets for small arms
60 swords

Building #67 was used for Ship and Boat communication instruction and contained:

4 boxes of signal fires
86 trumpets
1 fire and smoke signal tube
16 signal lights
70 telegraph operating keys
5 sailing lamps

DECLASSIFIED

DECLASSIFIED

G-2 MEMORANDUM No. 98-45: ACoS, G-2 5TH MARINE DIVISION

- 5 night signal training machines
- 45 binoculars
- 5 large binoculars (artillery type)
- 8 barometers
- 12 thermometers
- 2 anemometers
- 3 sextants
- 38 normal binoculars
- 3 wind velocity measurers
- 6 compasses
- 1 magnetic compass
- 3 model apparatus for sailing exercise
- 7 signal pistols
- 1 chronometer
- 1 deck watch
- 2 light machine guns
- 7 magnetic loud speakers
- 2 telegraphic sign training machines
- 3 radio apparatus

Building #68 was used for practical training in steam boiler operating and contained the following:

- 7 electrical pumps with accessories
- 1 filtration unit
- 5 full size steam boilers with accessories
- 3 crafts boilers

The Torpedo Lecture Hall (Building #78) contained the following:

- 1 discharge tube for torpedos
- 8 rocket guns and accessories
- 1 short rocket gun
- 2 high angle gun with accessories
- 2 trench mortars
- 22, 25mm machine guns
- 59, 13 mm machine guns
- 5, heavy machine guns
- 3 light machine guns

DECLASSIFIED

DECLASSIFIED

G-2 MEMORANDUM No. 98-45: ACofS, G-2, 5TH MARINE DIVISION

3667 small arms
74 pistols
22 training guns
1 armored car
230 steel helmets
103 officers long swords

The network of roads on the station, which are well planned and sufficient, consist of the main station road which leads to the SASEBO-AINOURA road; a road which parallels the west coast; a road to AINOURA; the network of roads to the buildings; and the connecting roads to the west coast.

All roads are of graded clay subsoil with only a few stretches having crushed or uncrushed rock surfacing.

With the exception of the main east-west road, all are narrow two lane with passing of vehicles difficult.

There are no railroads into the station. The nearest railroad, narrow guage, comes from the north to AINOURA circles north of the station boundary, then continues in a northerly direction, then runs due east, with a line going to SASEBO.

The quay, situated on the southern shore of the station, and sheltering a small boat harbor, is constructed of stone. It has 30 davits for ten men cutters, and a capacity of 42 cutters.

The very indented west coast affords ideal anchorage though more primitive than those we consider adequate. Three ships are anchored in this area as shown on the map. They are the BB SHIKISHIMA, the DD YANAGI, and the DD SUZUTSUKI. The best dock is the one berthing the obsolete battle ship SHIKISHIMA. At the rear of this dock are four cave entrances with one entrance showing the cave layout.

ACTIVITIES

The purpose of the AINOURA NAVAL RECRUIT TRAINING STATION was to process the recruits into general duty line sailors and to further train those of excellent character and intelligence in the practical technical subjects of gunnery, torpedo, and signalling.

DECLASSIFIED

 **DECLASSIFIED**

G-2 MEMORANDUM No. 98-45: ACoF9, G-2, 5TH MARINE DIVISION

A roster of officers of the station, by sections was as follows:

C.O. of Station: Captain SUCHI.
Administrative Section:

LtComdr MATSUO
Lt TERAJIMA
Lt MIZOGUCHI
Lt (jg) HIRANO
Lt (jg) (Supply) TAKEMORI
Ens HAMADA

Clerical Section (SEIRIBU)

LtComdr TAKODA
LtComdr SAKODA
Lt MOTOMURA
Lt (jg) SUGINO (Transferred)
Lt (jg) SAWAMURA
Ens HIGASHIMINE

1st Lt's Section:

1st Lt: LtComdr SHIBATA
Lt (jg) MATSUI
Lt (jg) FUCHIGAMI
Lt (jg) SHIMIZU

Medical Section:

Chief Surgeon: Capt (Med) YAMAMOTO
LtComdr (Med) KONDO

Supply Dept:

Chief Supply Officer: LtComdr (Supply) MIGITA
Ens (Supply) SANTOKU

Headquarters Bn:

DECLASSIFIED

DECLASSIFIED

G-2 MEMORANDUM No. 98-45: ACoS, G-2, 5TH MARINE DIVISION

Headquarters Bn:

CO: Lt TAZOE (Additional Duty)
Hqs Sec: Ens YAMANE (Additional Duty)
1st Co CO: Lt TAZOE
Plt Ldrs: 2 officers, 2 CPO's.

2nd Co CO: Lt MASUMURA
Plt Ldrs: 3 officers

3rd Co CO: Lt (Med) HIRAI
Plt Ldrs: 1 officer

4th Co CO: Lt (Supply) KATO
Plt Ldrs: 2 officers, 1 CPO

1st Lt's Battalion:

CO: LtComdr OHIRA
Adjutant: Lt OE

5th Co CO: Lt YAMAGUCHI
Plt Ldrs: 2 CPO's

6th Co CO: Lt YAMAJI
Plt Ldrs: 1 officer, 1 CPO

7th Co CO: Lt YAMADA
Plt Ldrs: 2 officers

8th Co CO: Lt TASHIRO
Plt Ldrs: 2 officers

9th Co CO: Lt KUSAMURA
Plt Ldrs: 1 officer, 1 CPO

1st Battalion:

CO: Lt HAMADA

DECLASSIFIED

DECLASSIFIED

G-2 MEMORANDUM No. 98-45: ACoS, G-2, 5TH MARINE DIVISION

11th Co. CO (TN: No 10th Co listed) Lt YOSHIDA
Plt Ldrs: 3 officers, 1 CPO
13th Co. CO (TN: No 12th Co listed) Lt (jg) KUWAHARA
Plt Ldrs: 1 officer, 3 CPO's

14th Co CO: Lt (jg) SHIEARA
Plt Ldrs: 1 officer, 3 CPO's

2nd Battalion:
CO: LtComdr UEMURA
Adjutant: Lt ATOMOTO

16th Co CO: (TN: No 15th Co listed) : Lt YOSHIDA
Plt Ldrs: 1 officer, 3 CPO's

18th Co CO (TN: No 17th Co listed) Lt (jg) OBUCHI
Plt Ldrs: 1 officer, 3 CPO's

19th Co CO: Lt (jg) NONAKA
Plt Ldrs: 1 officer, 3 CPO's

3rd Battalion:
CO: LtComdr MATSUO
Adjutant: Lt OMORI

21st Co CO (TN: No 20th Co listed): Lt YANOTO
Plt Ldrs: 1 officer, 3 CPO's

22nd Co CO: Lt (jg) INAMASU
Plt Ldrs: 1 officer, 3 CPO's

24th Co CO: (TN: No 23rd Co listed): Lt (jg) SAKAMOTO
Plt Ldrs: 4 CPO's

SECHIBARU HOANTAI (Naval Police Temporary)
CO: LtComdr MAEDA
Plt Ldrs: 1 officer

SHIKISHIMA HOANTAI (Naval Police temporary)
CO: Lt WATANABE
Plt Ldrs: 1 officer, 2 CPO's

DECLASSIFIED

DECLASSIFIED

G-2 MEMORANDUM No. 98-45: ACoFS, G-2, 5TH MARINE DIVISION

SUZUTSUKI HOANTAI (Naval Police Temporary)
CO: Lt (jg) SERIZAWA
Plt Ldrs: 3 officers

The station had an average of 13,500 men. When this number was increased, the additional 2000 would be housed in Lecture Halls and storage buildings. Approximately 7000 of these were recruits. Since the opening of the barracks, about 141,000 sailors were graduated in 21 classes.

The basic term of recruit training was six months for volunteers and five months for conscripts. During the war, however, the term was shortened in proportion to the war situation, to three months on the average, with the shortest course on record being about one months duration. The daily training schedule of the training station was:

DAILY SCHEDULE OF NAVAL TRAINING BARRACKS
THREE MONTHS SCHEDULE

<u>Summer</u>	<u>Winter</u>	<u>Schedule</u>
0500	0630	Get up
0530	0645	Respects to Emperor & exercise
0615	0715	Knock off exercise
0645	0730	Chow down
0715	0800	Daily cleaning
0800	0845	Knock off cleaning
0815	0915	Start work
0915-0930		Rest
1015-1030	1015-1030	Rest
1130	1130	Knock off work
1145	1145	Chow Down
1300	1300	Start work
1400-1415	1415-1430	Rest
1500-1515		Rest
1600	1530	Knock off work
1615	1545	Start exercise
1700	1630	Knock off exercise
1730	1645	Chow down
1810	1730	Liberty parties leave
1945	1915	Prepare beds

DECLASSIFIED

DECLASSIFIED

G-2 MEMORANDUM No. 98-45: ACoFS, G-2, 5TH MARINE DIVISION

<u>Summer</u>	<u>Winter</u>	<u>Schedule</u>
2000	1930	Sweep deck
2015	1945	Tattoo
2030	2000	Taps

(Respects to the Emperor consisted of facing east and bowing)

TRAINING OF NEW TROOPS (Section on Sailors)

<u>Daily Instruction Schedule</u>	<u>Instruction Hours</u>	<u>Location</u>
<u>GENERAL</u>		
Spiritual Training	40	Barracks
Exercise	5	Parade Gr.
Fencing & Judo	5	" "
Technical Training	36	Barracks and parade grounds
<u>MILITARY</u>		
Training on Ship Guns	24	Model Battery
Gen. guns and weapons	5	Barracks & Model Battery
Various Weapons	6	Wpns. Class room
Training without arms	12	Parade Gr.
<u>Small Arms Instruction</u>		
Individual Training	15	" "
Squad Training	9	" "
Platoon Training	9	" "
Company Training	9	" "
<u>Land Fighting Technique</u>		
Land Warfare Instruction	12	Barracks fields and mountains
Training in field	24	in vicinity War Training field at SECH IBARU

DECLASSIFIED

DECLASSIFIED

G-2 MEMORANDUM No. 98-45: ACoS, G-2, 5TH MARINE DIVISION

<u>Daily Instruction Schedule</u>	<u>Instruction Hours</u>	<u>Location</u>
Firing of rifle & pistol	18	Pistol Range
<u>Handling Technique</u>		
Ship hulls and tools (gen)	24	Model Class room
Shipboard duty (generally)	18	SHIKI SHIMA
Small Boats	3	Small Boat House
Loading of small boats	60	Vicinity of Sea
How to use gas mask	6	Barracks
<u>Miscellaneous</u>		
Summary on navigational techniques	3	Barracks
Summary on techniques of torpedos mines, and submarines.	6	Wpns. Classroom
Hand signalling	5	Parade Gr.
Semaphore signalling	10	Parade grounds and vicinity of barracks
Oral Command procedure	10	" " "
Gen. rules and regulations	15	Barracks
Sanitation & First Aid	3	" "
Ordinary lessons	Undetermined	" "
Military Songs	11	Par. Gr.
Summary on Engineering Technique	3	Barracks
<u>Total Lesson Hours 390</u>		

Saturday-Instruction in morning; "field day" in afternoon.

Sunday-Rest

Festival Days-Permission to go out (uncertain)

Note: In cases when the course was speeded up due to wartime emergency, some of the lessons in the table were omitted or shortened.

DECLASSIFIED

DECLASSIFIED

G-2 MEMORANDUM No. 98-45, ACoS, G-2, 5TH MARINE DIVISION

TRAINING OF NEW TROOPS (Section on Firemen)
THREE MONTH SCHEDULE

<u>Daily Instruction Schedule</u>	<u>Instruction Hours</u>	<u>Location</u>
Spiritual Training	40	Barracks
Exercise	5	Par.Gr.
Fencing & Judo	5	" "
Technical Training	36	Barracks & Par.Gr.
 <u>MILITARY</u>		
Survey of weapons used	5	Wpns. Class- room
Training without arms	12	Parade grounds
Individual Training	12	" "
Squad Training	9	" "
Platoon Training	6	" "
Company Training	6	" "
Land Warfare instruction	9	Barracks & vicinity of fields & mnts.
Training in field	18	War Training fields at SECHIBARU
Firing of rifle and pistol	18	Pistol Range

Handling Technique

Snip Muls & tools (generally)	95	Model Class room
Shipboard duty (generally)	15	SHIKISHIMA
Small boats	3	Small boat house
Loading of small boats	40	Vicinity of sea
How to use gasmasks	6	Barracks

DECLASSIFIED

DECLASSIFIED

G-2 MEMORANDUM No. 98-45, ACoS, G-2 5TH MARINE DIVISION

Engineering Technique

<u>Daily Instruction Schedule</u>	<u>Instruction Hours</u>	<u>Location</u>
General Engineering	3	Eng. Class-room
Gen. engines use in ships	3	Eng. class-room
General electric equipment	3	Barracks
Engine handling	9	Eng. Class-room
Actual engine handling	50	" " "
Fire methods	12	" " "
Fuel and lubricating oil	5	Barracks

Miscellaneous

Torpedoes, mines and weapons	3	Wpns. Classroom
Hand signalling	10	Vicinity of barracks & par. grounds
Semaphore signalling	5	" "
Oral Command procedure	5	" "
Gen. rules & regulations	15	Barracks
Sanitation & first aid	3	" "
Gen. repairing instruction	6	Repair classroom
Ordinary lessons	Undetermined	Barracks
Military songs	" "	Par. Grounds

Total lesson hours-390

Saturday-Instruction in morning. "field day" in afternoon.

Sunday- Rest.

Festival days-Liberty.(subject to change)

Note: In cases when the course was speeded up due to wartime emergency, some of the lessons in the table were omitted or shortened.

The permanent staff of the station consisted of experienced men who served on general vessels or at shore establishments.

DECLASSIFIED

DECLASSIFIED

G-2 MEMORANDUM No. 98-45:ACofS, G-2, 5TH MARINE DIVISION

They received no special training for their duties. Their term of duty was three years at the longest and not less than six months.

In times of peace, it was the custom to have excellent recruits, as petty officers, serve as instructors for more than two years, but in war time, on account of the shortage of personnel, their duty as instructors became secondary and accordingly they were transferred to front line duty as occasion called.

The parade ground was used for land battle training, physical drill, and sports, by recruits.

There were no special facilities for recreation permitted to be used in the Barracks, with the exception of "GO" (Japanese checkers), "SHOGI" (Japanese chess), radio, and gramophone. Summer and winter holidays were usually given. During the war, however, there were no holidays except Sundays.

visitors were usually permitted before the war, except during daytime tasks. Since 1943 only those men who had special reasons because of domestic problems were permitted to meet with civilians. This was ruled largely to relieve transportation difficulties.

SHIPS

The obsolete battle ship SHIKISHIMA, launched in 1898 in London, with a displacement of 15095 tons, was a participant in the Russo-Japanese War. It was designated as a coast defense ship during this war but being unseaworthy was used for training recruits the fundamentals of sea duty.

The first class destroyer SUZUTSUKI, displacement 3000 tons, was attacked on 19 April, 1945 by the American Air Forces off the north west point of AMAMI OSHIMA.

DECLASSIFIED

DECLASSIFIED

G-2 MEMORANDUM No. 98-45: ACoS, G-2, 5TH MARINE DIVISION

Seriously damaged, she arrived at SASEBO on 21 April and after temporary repairs to prevent her from sinking, was moored at her present location for safety against storms.

The destroyer YANAGI, launched in 1933 at the SASEBO NAVAL ARSENAL, displacement 850 tons was withdrawn from service in 1940. All arms and equipment were removed and it was moored in its present location for safety. There never was a definite program for its use by the station personnel.

DEFENSES

The defense of the station consisted of five 12 cm. AA guns; six 8 cm. AA guns; Twelve 13 mm. machine guns; and eight 7 mm machine guns. These weapons were in concrete, log and mud, and earth emplacements.

Small one man pillboxes of concrete were located at strategic points among the buildings and vicinity. Over sixty air raid shelters were constructed, with about the same number of caves for storage. All installations possible are shown on the accompanying map.

RELIGION

There are two shrines located on the station which were used and cared for by the station personnel.

George A. Roll
GEORGE A. ROLL

LtCol, U. S. Marine Corps
Asst Chief of Staff, G-2.

DISTRIBUTION: CG, VAC (1)
F I L E (1)

DECLASSIFIED

~~SECRET~~
DECLASSIFIED

G-2 MEMORANDUM No. 98-45: AC618 G-2 5TH MARINE DIVISION

THE
WEST
COAST



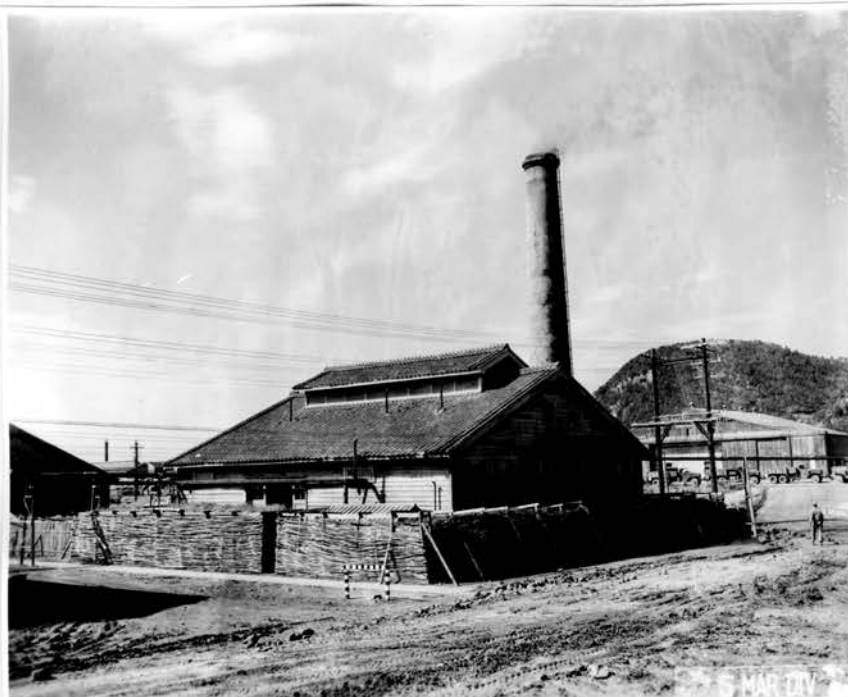
page 2

~~SECRET~~
DECLASSIFIED

██████████

G-2 MEMORANDUM No. 98-45: ACofS G-2 5TH MARINE DIVISION

BOILER
STATION



PAGE 2

BOILER
STATION
interior



page 2

██████████
DECLASSIFIED

~~SECRET~~
G-2 MEMORANDUM No. 98-45: ACoFS G-2 5TH MARINE DIVISION
~~SECRET~~

BATH HOUSE
washing
tubs



page 2

BATH HOUSE
soaking
tub



page 2

~~SECRET~~
DECLASSIFIED
~~SECRET~~

SECRET

G-2 MEMORANDUM No. 98-45: ACoFS G-2 5TH MARINE DIVISION

BARRACKS
showing
wind
braces



page 3

BARRACKS
interior
showing
hammock
hooks



page 3

DECLASSIFIED

SECRET

DECLASSIFIED

BUILDING #1
parking sheds
sentry boxes
and main
entrance
road.



page 3

BUILDING # 24
main admin-
istration
building.



page 3

DECLASSIFIED

~~CONFIDENTIAL~~

G-2 MEMORANDUM No. 98-45: ACorS G-2 5TH MARINE DIVISION

DECLASSIFIED

HOSPITAL



page 3

HOSPITAL
ward
room

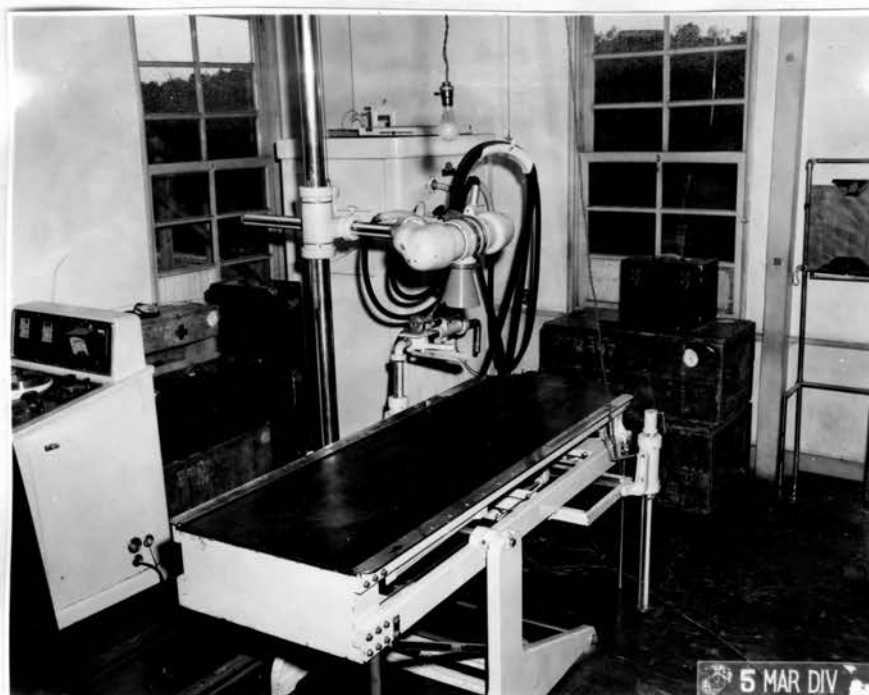


page 3

DECLASSIFIED

DECLASSIFIED

HOSPITAL
japanese
x-ray
machine



page 3

HOSPITAL
japanese
operating
table



page 3

~~CONFIDENTIAL~~
DECLASSIFIED

~~CONFIDENTIAL~~

G-2 MEMORANDUM No. 98-45: ACofS G-2 5TH MARINE DIVISION

HOSPITAL
Japanese
water
sterilizer



page 3

BUILDING # 28
torpedoes
used
for
instruction



page 3

DECLASSIFIED

~~CONFIDENTIAL~~

~~CONFIDENTIAL~~

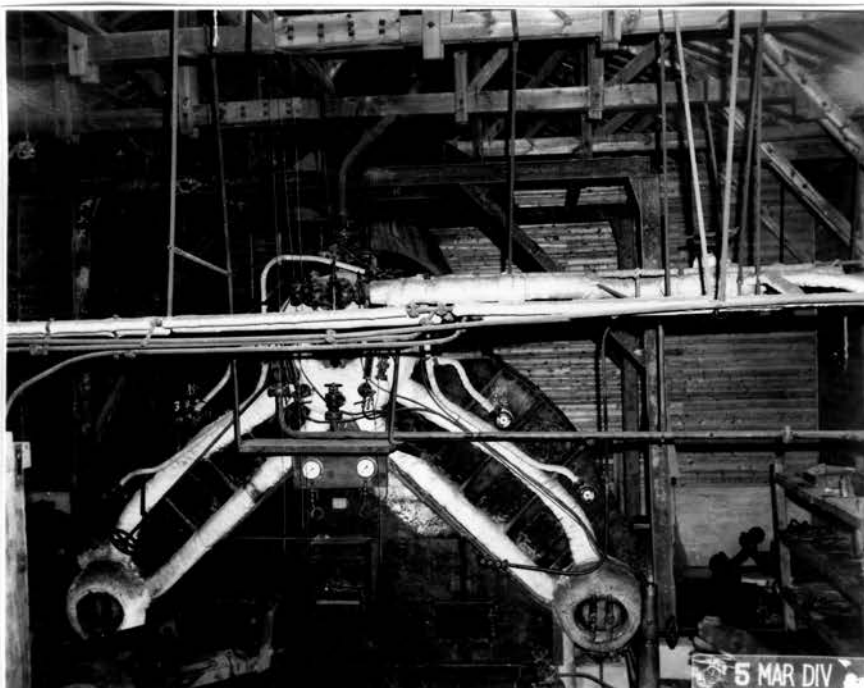
G-2 MEMORANDUM No. 98-45: ACoFS G-2 5TH MARINE DIVISION

BUILDING #67
showing
ship
model



page 4

BUILDING #68
training
boilers



page 5

~~CONFIDENTIAL~~

DECLASSIFIED

DECLASSIFIED

BUILDING #68
bayonet
and
fencing
gear



page 5

BUILDING #75
showing
work
benches



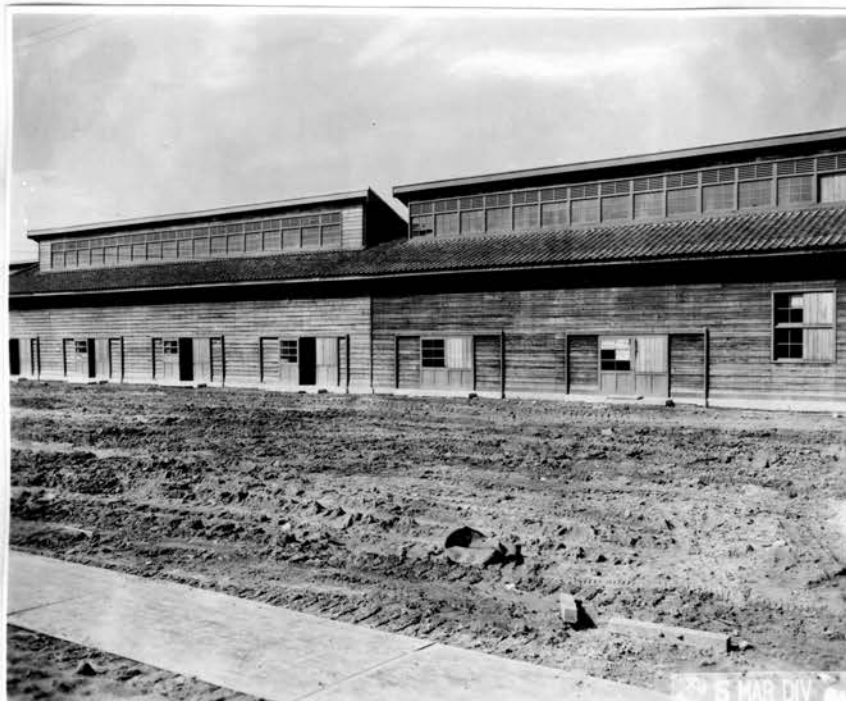
DECLASSIFIED

~~CONFIDENTIAL~~

G-2 MEMORANDUM No. 98-45: ACoS 1-2 5TH MARINE DIVISION

DECLASSIFIED

BUILDING #75
exterior



BUILDING #52
exercise
hall and
recreation



DECLASSIFIED

██████████
G-2 MEMORANDUM No. 98-45: ACoFS G-2 5TH MARINE DIVISION

BUILDING #
11
20
21

DECLASSIFIED



BUILDING #19
and
drying
racks



DECLASSIFIED
██████████

THE QUAY
showing
boats
and
davits

DECLASSIFIED

page 6

DECLASSIFIED



~~CONFIDENTIAL~~

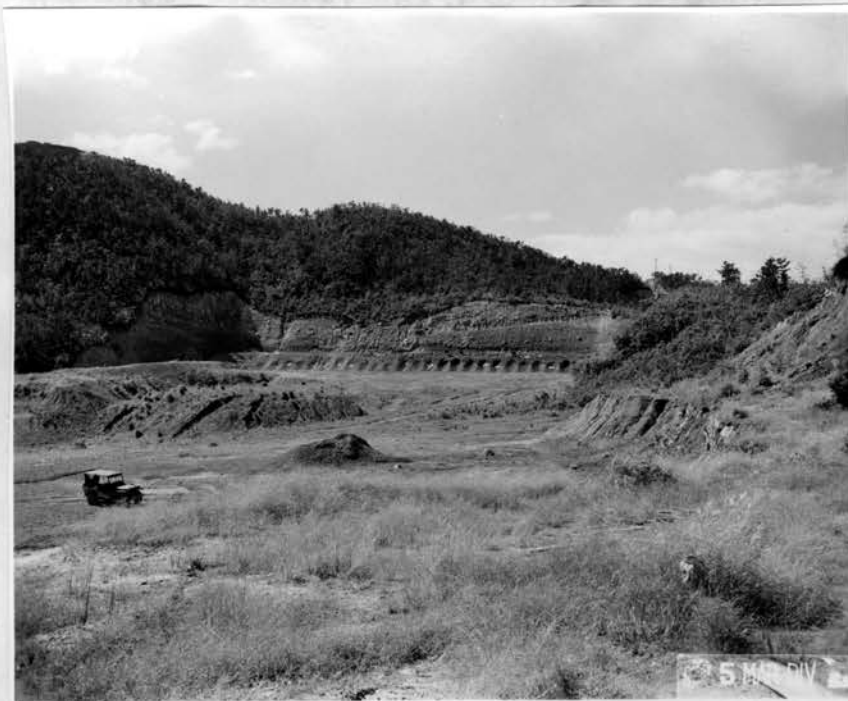
G-2 MEMORANDUM No. 98-45: ACoF's G-2 5TH MARINE DIVISION

PARADE
GROUNDS



page 15

RIFLE
RANGE



~~CONFIDENTIAL~~
DECLASSIFIED

G-2 MEMORANDUM No. 98-45: ACoF3 G-2 5TH MARINE DIVISION

BATTLESHIP
SHIKISHIMA



page 15

CAVES
rear of
SHIKISHIMA
dock



page 15

DECLASSIFIED

[REDACTED]
G-2 MEMORANDUM No. 98-45: ACoFS G-2 5TH MARINE DIVISION

DESTROYER
SUZUTSUKI



page 15

DESTROYER
YANAGI



page 16

CONFIDENTIAL
DECLASSIFIED

~~CONFIDENTIAL~~

G-2 MEMORANDUM No. 98-45: ACoFS G-2 5TH MARINE DIVISION

CAVES
north of
rifle
range

DECLASSIFIED

page 16

CAVES
north of
rifle
range

page 16



~~CONFIDENTIAL~~
DECLASSIFIED

[REDACTED]

G-2 MEMORANDUM No. 98-45: ACoFS G-2 5TH MARINE DIVISION

CAVES
northwest
of
building #5

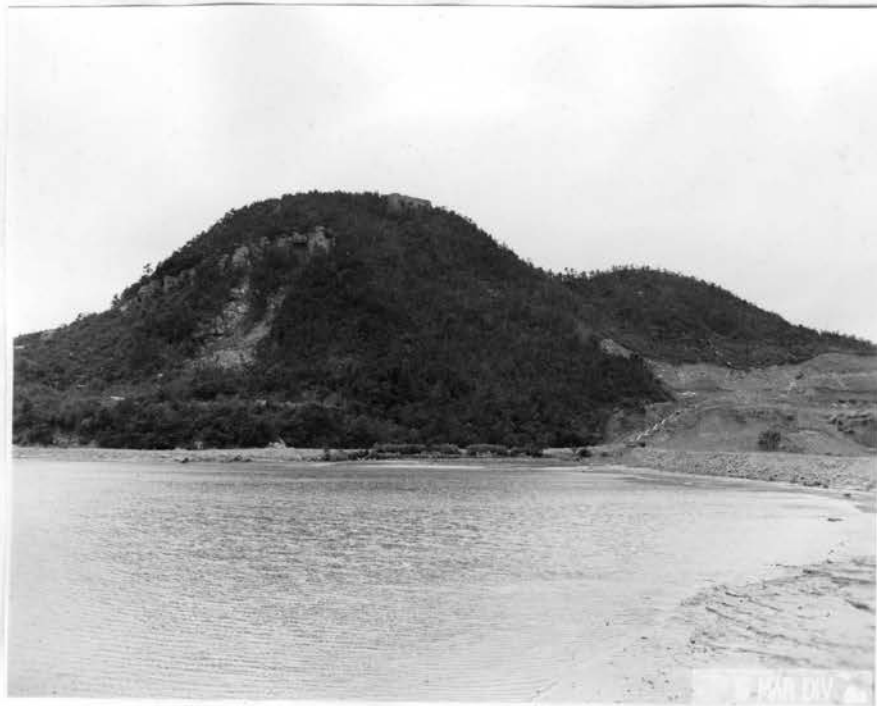


page 16

DECLASSIFIED [REDACTED]

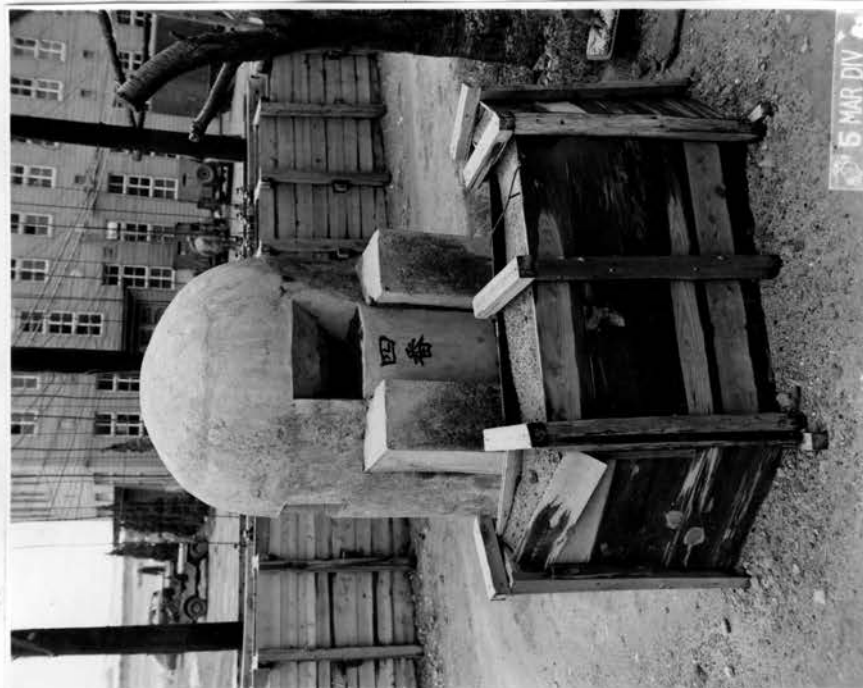
~~CONFIDENTIAL~~
G-2 MEMORANDUM No. 98-45: ACofS G-2 5TH MARINE DIVISION

BLOCKHOUSE



page 16

PILLBOX



page 16

~~CONFIDENTIAL~~
DECLASSIFIED

~~CONFIDENTIAL~~

G-2 MEMORANDUM No. 98-45: ACofS G-2 5TH MARINE DIVISION

AIR RAID
SHELTER



page 16

AIR RAID
SHELTER



page 16

~~CONFIDENTIAL~~

DECLASSIFIED

~~CONFIDENTIAL~~

G-2 MEMORANDUM No. 98-45: ACoFS G-2 5TH MARINE DIVISION

DUMMY
LOADER

DECLASSIFIED



DECLASSIFIED ~~CONFIDENTIAL~~

~~SECRET~~

G-2 MEMORANDUM No. 98-45: ACoFS G-2 5TH MARINE DIVISION

SHRINE



SHRINE



DECLASSIFIED

~~SECRET~~

~~CONFIDENTIAL~~

G-2 MEMORANDUM No. 98-45: ACofS G-2 5TH MARINE DIVISION

DECLASSIFIED

DECLASSIFIED

AINOURA NAVAL RECRUIT TRAINING STATION

PRIOR TO OCCUPATION

PREPARED BY A.C.O.S.-G.2.
FIFTH MARINE DIVISION
SCALE: APPROX. 1:5000

ROADS
RAILROAD
SEA WALL
PHOTO
BOUNDARY

1. PARKING SHED
 2. SENTRY BOX
 3. SENTRY BOX
 4. LAVATORY
 5. WORK SHOP
 6. BARRACKS
 7. BARRACKS
 8. POWER DISTRIBUTION STATION
 9. BOILER STATION
 10. FOOD STUFF STOREHOUSE
 11. KITCHEN
 12. WASH & DISINFECT TABLE WARE
 13. BARRACKS
 14. BARRACKS
 15. BARRACKS
 16. HOSPITAL-POWER STATION
 17. CLOTHES DRYING BLDG.
 18. LECTURE HALL-PAYMASTER
 19. CLOTHES WASHING BLDG.
 20. BOILER STATION
 21. BATH HOUSE
 22. BARRACKS
 23. BARRACKS
 24. MAIN ADMINISTRATION BLDG.
 25. CLOTHES DRYING RACKS
 26. CANTINE
 27. LECTURE HALL
 28. LECTURE HALL FOR ARMS
 29. LIGHT OIL STOREHOUSE
 30. GARAGE
 31. BARRACKS-WASH RM & HEAD
 32. " " " "
 33. " " " "
 34. " " " "
 35. " " " "
 36. " " " "
 37. " " " "
 38. " " " "
 39. " " " "
 40. SHED
 41. BARRACKS
 42. LAVATORY
 43. LAVATORY
 44. BARRACKS
 45. LECTURE HALL & BARRACKS
 46. BARRACKS-WASH RM & HEAD
 47. " " " "
 48. " " " "
 49. " " " "
 50. EXERCISE HALL
 51. BATH HOUSE
 52. KITCHEN-ENLISTED
 53. BARRACKS-WASH RM & HEAD
 54. SICK BARRACKS
 55. SHED
 56. BOILER STATION
 57. FOOD STUFF STOREHOUSE
 58. WASH & DISINFECT TABLE WARE
 59. BARRACKS-WASH RM & HEAD
 60. PLANE HANGER
 61. " " " "
 62. " " " "
 63. " " " "
 64. " " " "
 65. " " " "
 66. " " " "
 67. " " " "
 68. " " " "
 69. " " " "
 70. SHED
 71. STOREHOUSE
 72. " " " "
 73. POWDER MAGAZINE
 74. BOAT AREA
 75. LECTURE HALL-MECHANICAL ENGINEERING
 76. BOILER BLDG. FOR PRACTICAL TRAINING
 77. LECTURE HALL-ENGINEERING
 78. LECTURE HALL-TORPEDOS
 79. BOAT HOUSE
 80. LAVATORY
- A. DESTROYER "SUZUTSUKI"
B. BATTLE SHIP "SHIKISHIMA"
C. DESTROYER "YANAGI"
- AIR RAID SHELTER-ENLIST-OFF.
CAVE
● 13 MM MACHINE GUN-AA
○ 7 MM MACHINE GUN-AA
□ 8 CM. AA. MACHINE GUN
△ 12 CM. AA GUN
▲ SHRINE

CONFIDENTIAL

DECLASSIFIED