





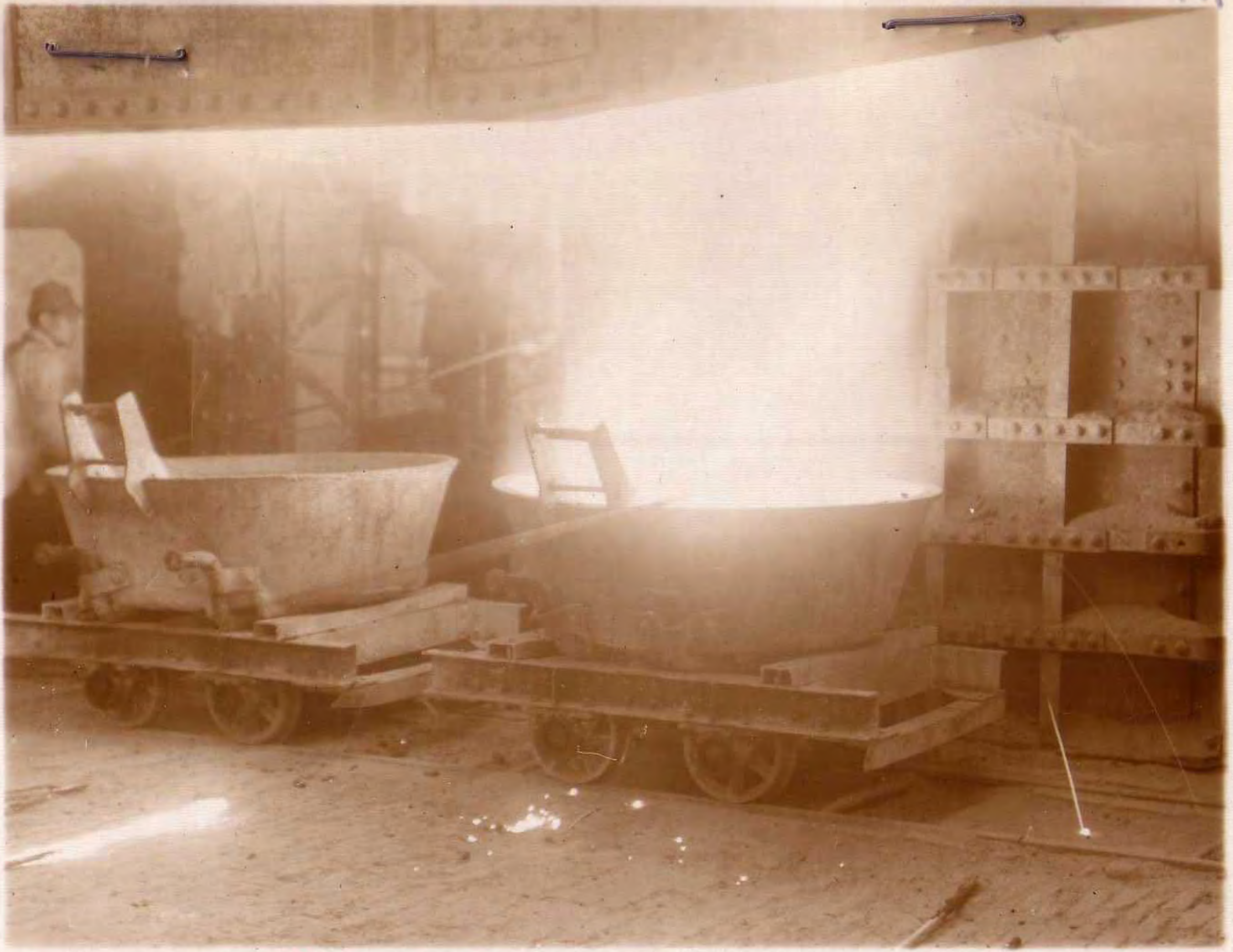




No



59



DECLASSIFIED

Authority NND 760124

By HR-M NARA, Date 1/10/91

NIIGATA 90.9, FUKUSHIMA 90.10 TARGET 1590 (OUTLYING)

CONFIDENTIAL equals British Confidential

DESCRIPTION OF TARGETS

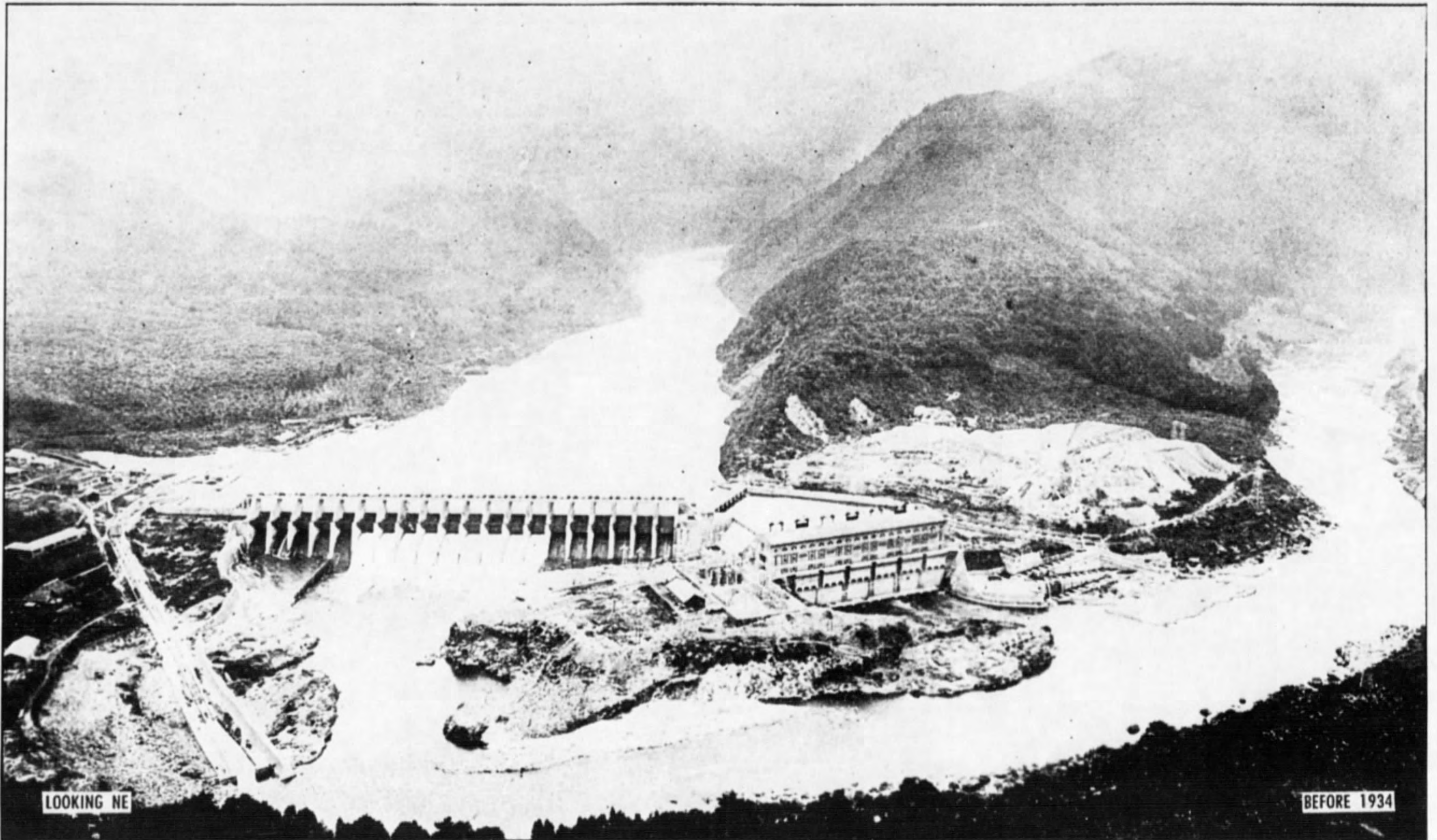
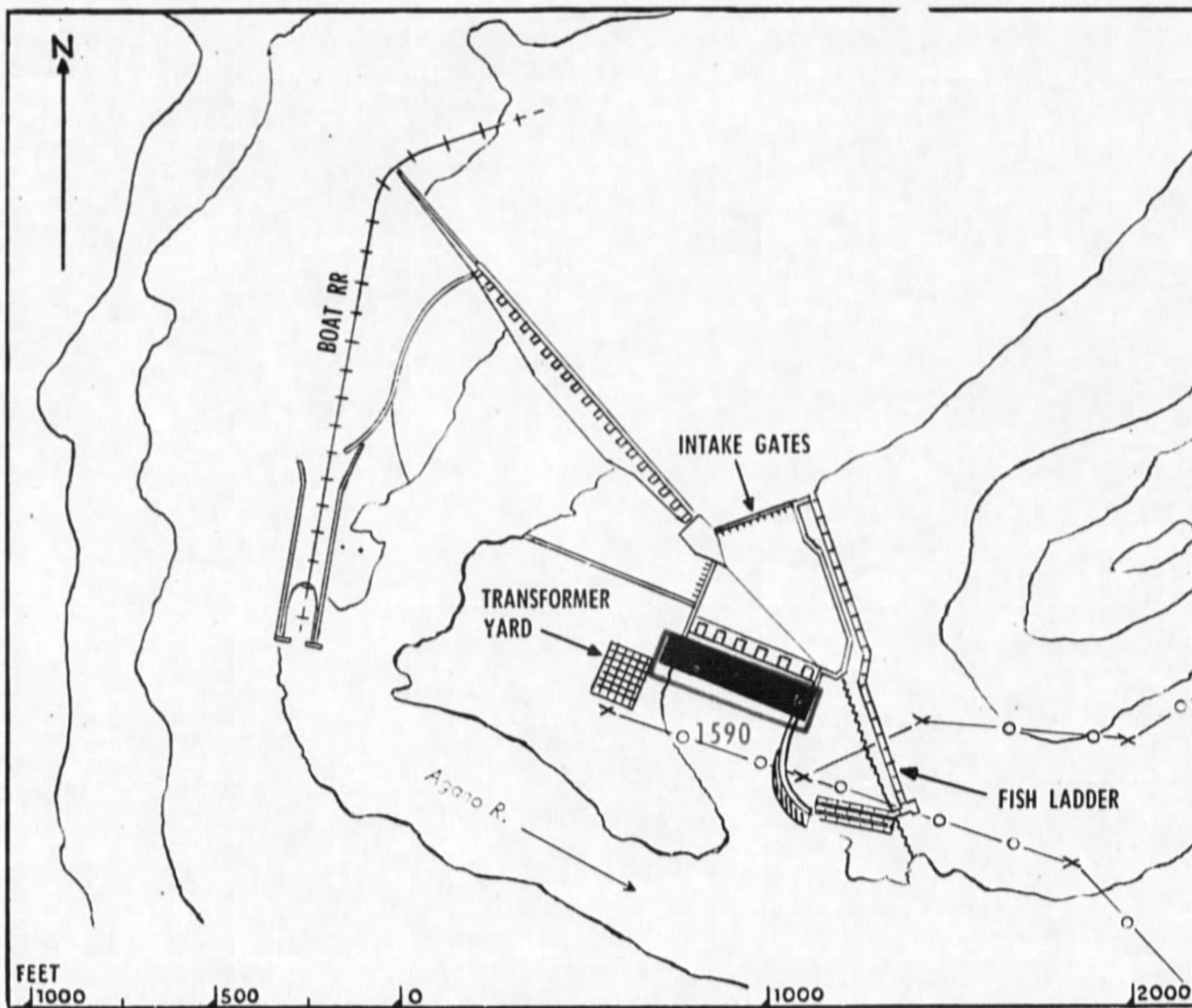


PHOTO 26—TARGET 1590 Kanose Hydro Plant.

NIIGATA 90.9, FUKUSHIMA 90.10 TARGET 1590 (OUTLYING)

NIIGATA 90.9, FUKUSHIMA 90.10 TARGET 1590 (OUTLYING)



TARGET
1590 KANOSE HYDRO PLANT
 AGANO RIVER
 (ELECTRIC POWER)

37° 42' N 139° 28' E (Approx)—Installed cap 45,000 KW. Dry season output 20,000 KW. 1000 ft concrete dam. Six vertical generators in 300 by 80 ft concrete power house. Transformer yard adjoins to W. Power lines lead five mi E to Toyomi Hydro Plant (TARGET 1589) and 1/2 mi SE to Showa Fertilizer Co (TARGET 1536). (See photo 26; map on page M-10.)

CONFIDENTIAL equals British Confidential

NIIGATA 90.9, FUKUSHIMA 90.10 TARGET 1590 (OUTLYING)

3636-31—Niigata-Fukushima—8-24-44—First Proof

DESCRIPTION OF TARGETS

NIIGATA 90.9, FUKUSHIMA 90.10 TARGETS 1536, 1589 (OUTLYING)

CONFIDENTIAL equals British Confidential

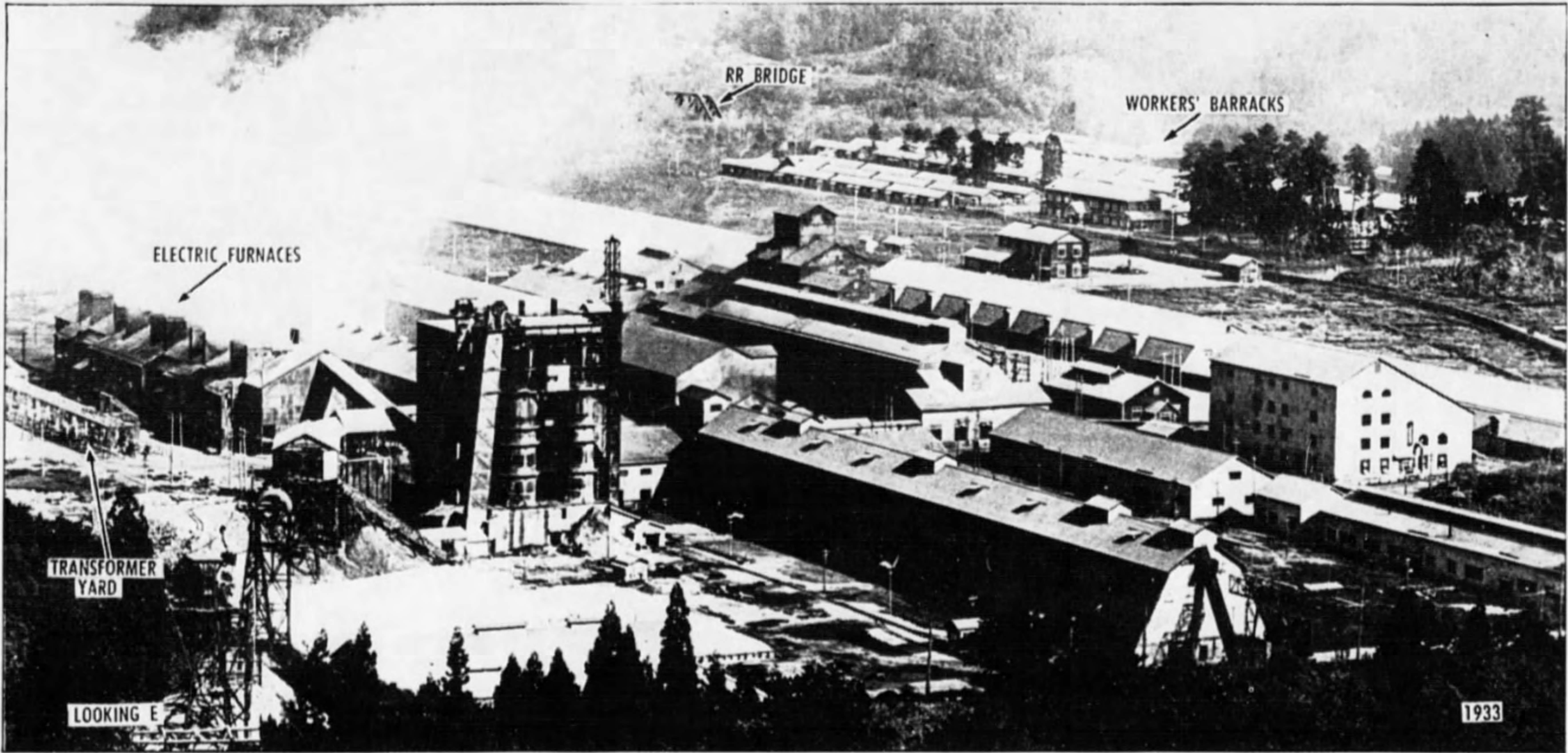
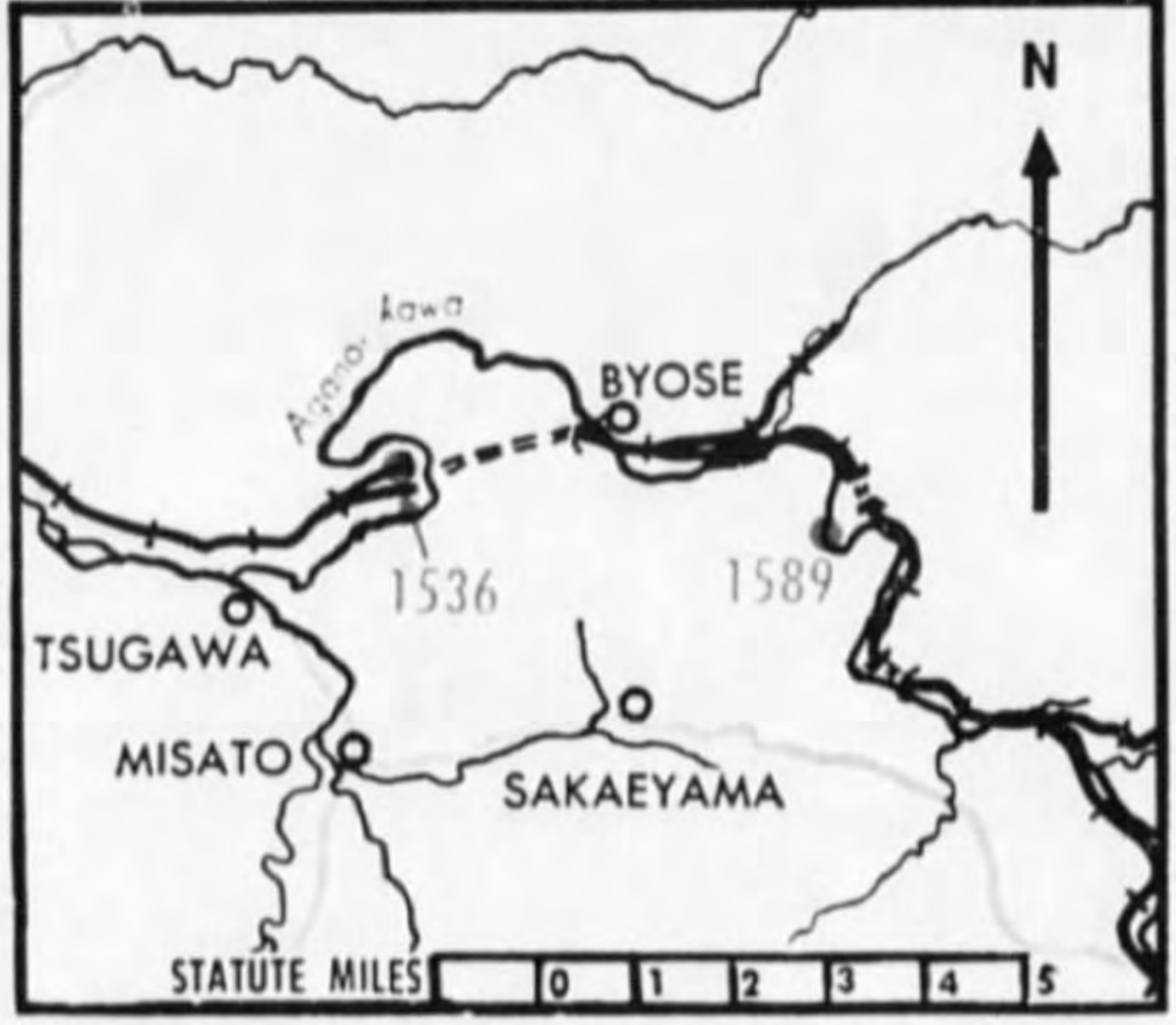
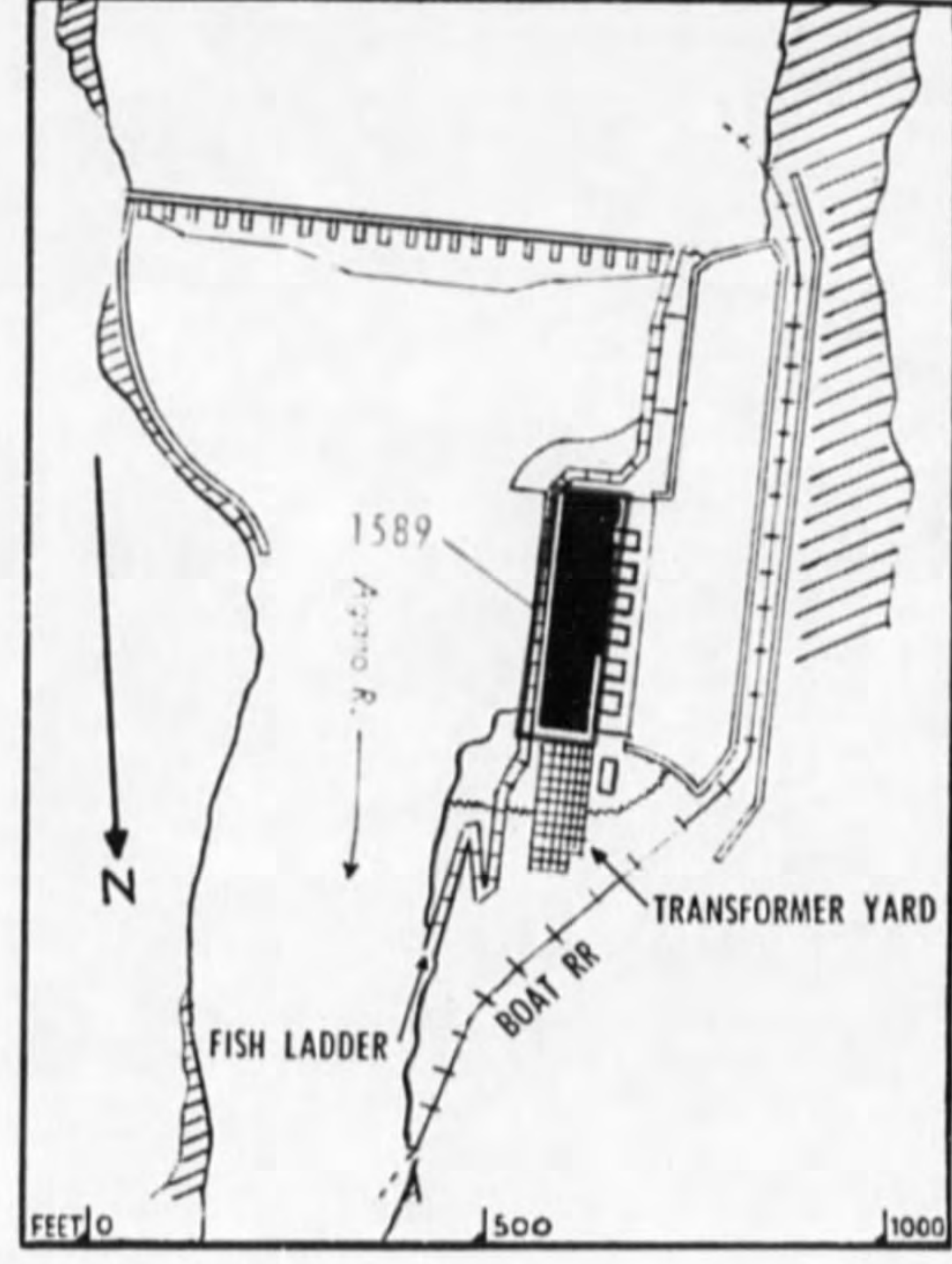


PHOTO 27—Kanose—TARGET 1536 Showa Fertilizer, Kanose Plant.



TARGET
1536
SHOWA FERTILIZER, KANOSE PLANT
 KANOSE
 (CHEMICALS)

37° 42' N 139° 28' E (Approx)—One of largest carbide plants in Japan. Estimated annual cap 124,000 metric tons, approx 16% of Japan Proper. Nitrogen fixation cap 10,000-20,000 metric tons, less than 5% of Japanese total. Reported large producer of acetone, (essential for cordite powders) and other carbide derivatives. Located approx 20 miles SE of Niigata. Plant site, about 1/2 mi E-W and 1/4 mi N-S is approx 1/8 mi N of Kanose station. RR spur to plant. Critical points: Transformer station, air liquefaction unit. Power normally obtained from TARGET 1590, 1/2 mi NW.
 (See photo 27; map on page M-10.)



TARGET
1589
TOYOMI HYDRO PLANT
 AGANO RIVER
 (ELECTRIC POWER)

37° 42' N 139° 34' E (Approx)—Installed cap 53,000 KW. Dry season output approx 24,000 KW. 300 by 80 ft power house along W bank of Agano R directly below 675 ft concrete dam. Six vertical generators. Transformer yard adjoins power house to N.
 (See photo 28; map on page M-10.)

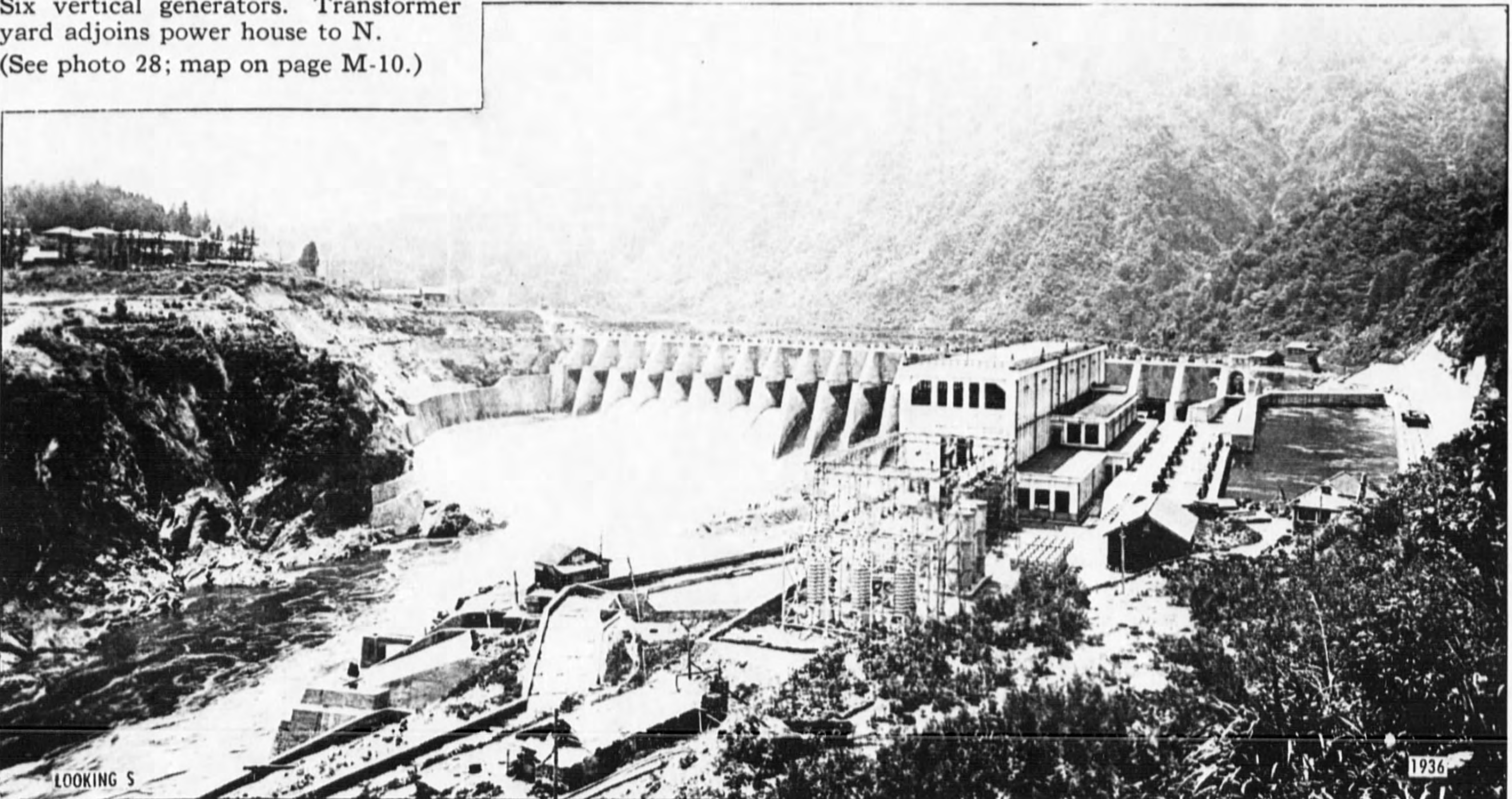


PHOTO 28—TARGET 1589 Toyomi Hydro Plant.

CONFIDENTIAL equals British Confidential

NIIGATA 90.9, FUKUSHIMA 90.10 TARGETS 1536, 1589 (OUTLYING)

3636-32—Niigata-Fukushima—8-24-44—First Proof

