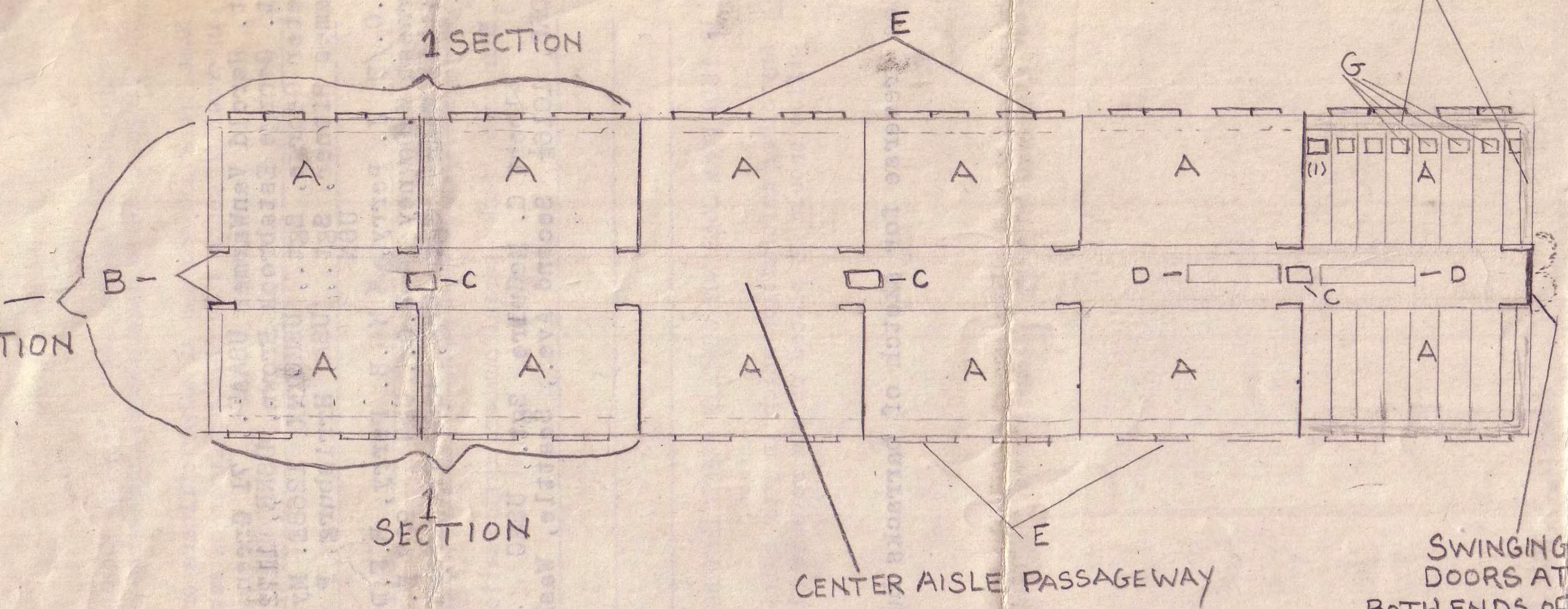


SKETCH OF INTERIOR OF BKS LOOKING DOWN —
 BOTTOM TIER OF BUNK Duplicated TOP

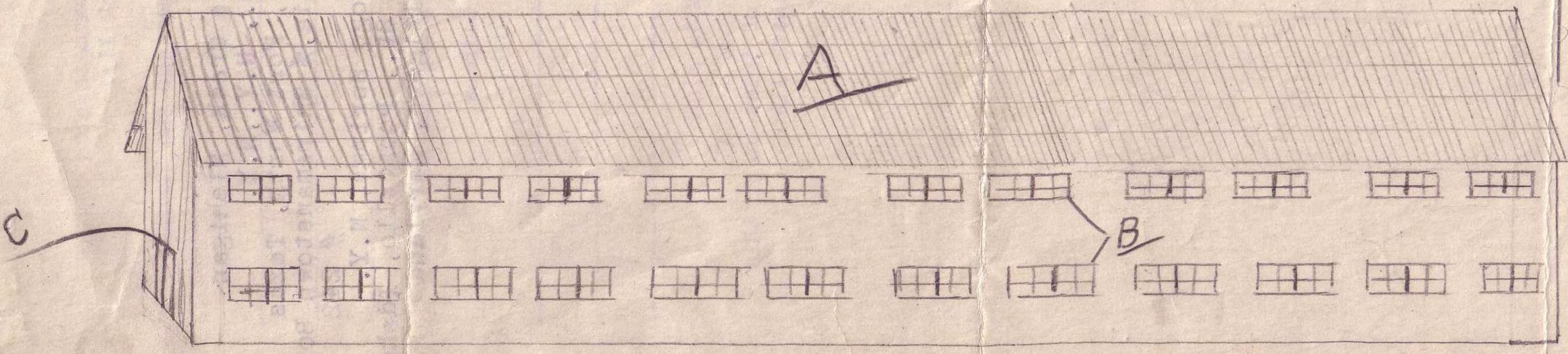


LEGEND

A	SLEEPING BAYS-FOR (1) INDIVIDUAL SLEEP
B	LADDERS (14) IN E
C	SHALLOW CEMENT
D	MESS TABLES (2)
E	SLIDING WINDOWS TO A BAY (24) TO
F	WOODEN SHELVES-RUN LENGTH AND WIDTH FOR CLOTHING
G	STACKED BLANKETS

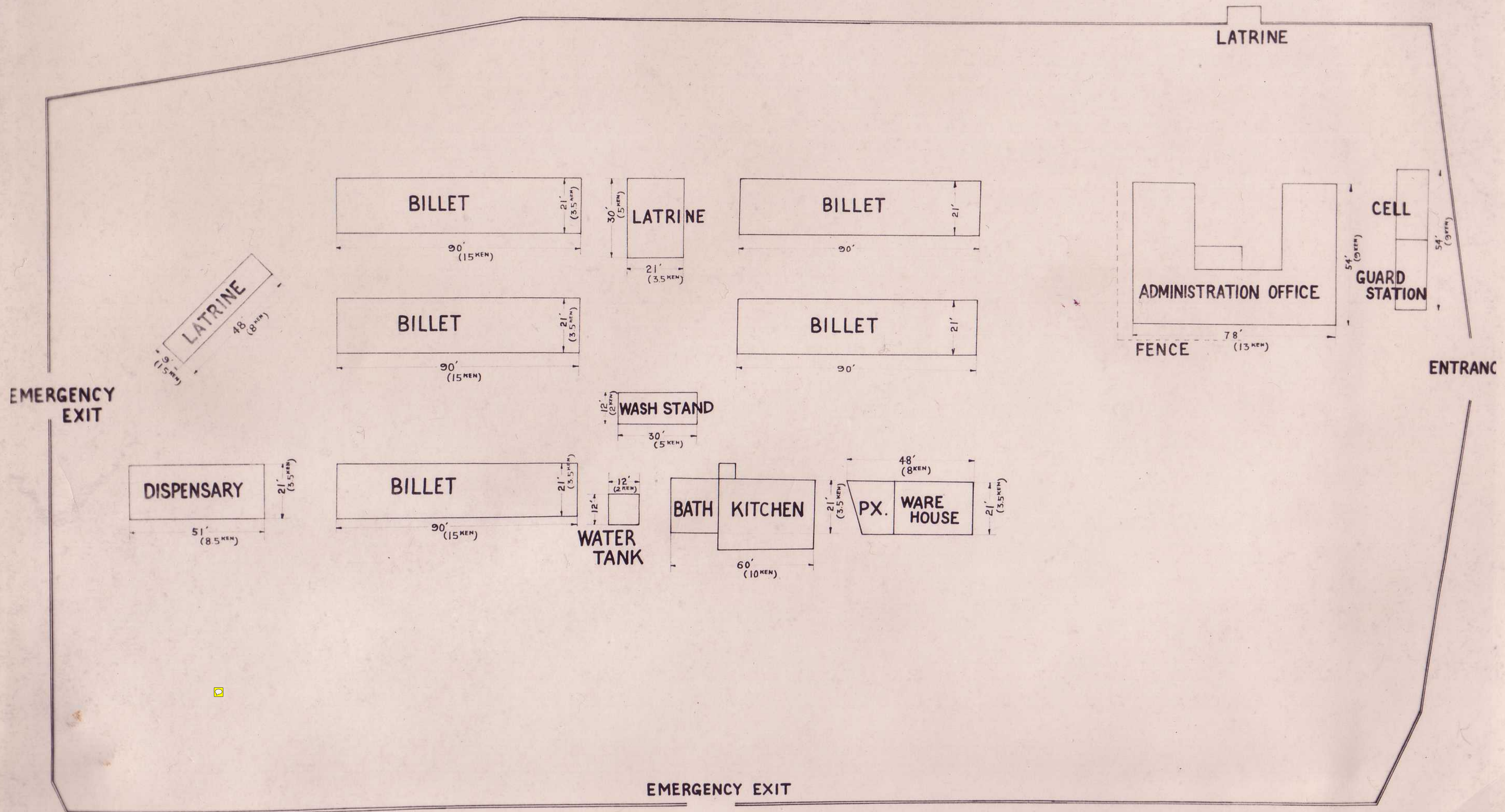
BARRACKS—SIDE

A	ROOF OF SITING
B	SLIDING WINDOW BOTH SIDES OF
C	SWINGIN DOORS ENDS OF BLDG.



LAYOUT OF THE MITSUSHIMA POW CAMP

SCALE 1/4" = 6' (ORIGINAL)

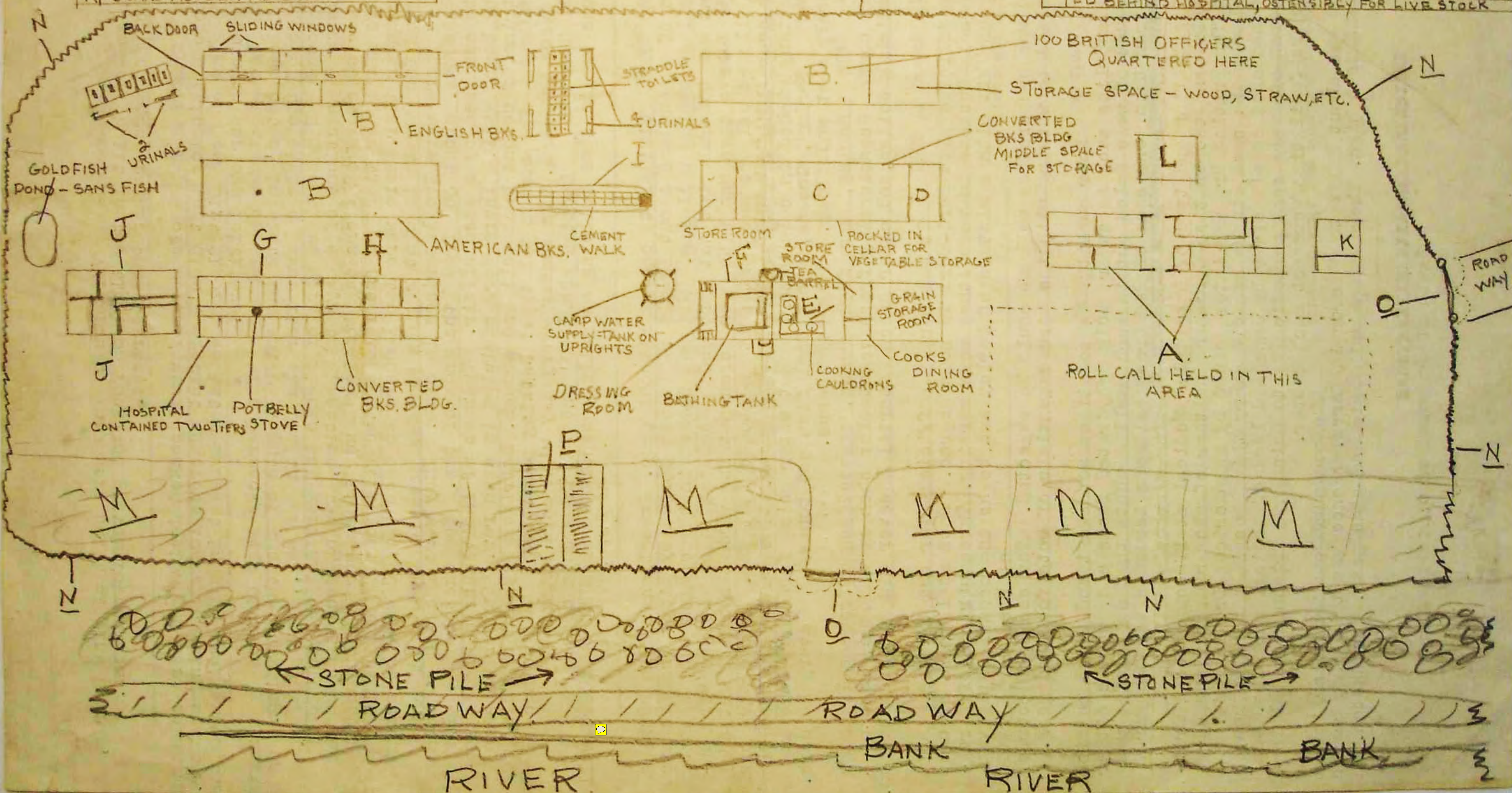


DEFENSE EXHIBIT K

COMPOUND AND BUILDINGS AT MITSUSHIMA P.O.W. CAMP-12-D

- A ADM. BLDG. & JAP QTRS.
- B POW'S BARRACKS
- C-D STORAGE BLDG & COBBLER AND CLOTHING ROOM
- E-F GALLEY & BATHOUSE COMBINED
- G-H HOSPITAL AND LIGHT DUTY WORK ROOM
- I WASHRACKS - SPIGOTS ON BOTH SIDES
- J WOODEN COMPARTMENTS
SICKBAY AND MEDIC'S QTRS.
- K GUARD HOUSE AND BRIG

- L JAP OUTHOUSE WITH GALLEY & STOREROOMS
- M GARDEN PLOTS
- N 12' WOODEN FENCE
- O MAIN AND SIDE GATES
- P WOOD SHED
- ⊗ IN THE LATTER MOS. OF THE WAR, THE STONE
PILE WAS MOVE OUT 4-5 YDS AND FENCE
BROUGHT OUT SAME DISTANCE. 2 BLDG WERE ERCT-
ED BEHIND HOSPITAL, OSTENSIBLY FOR LIVE STOCK













61

