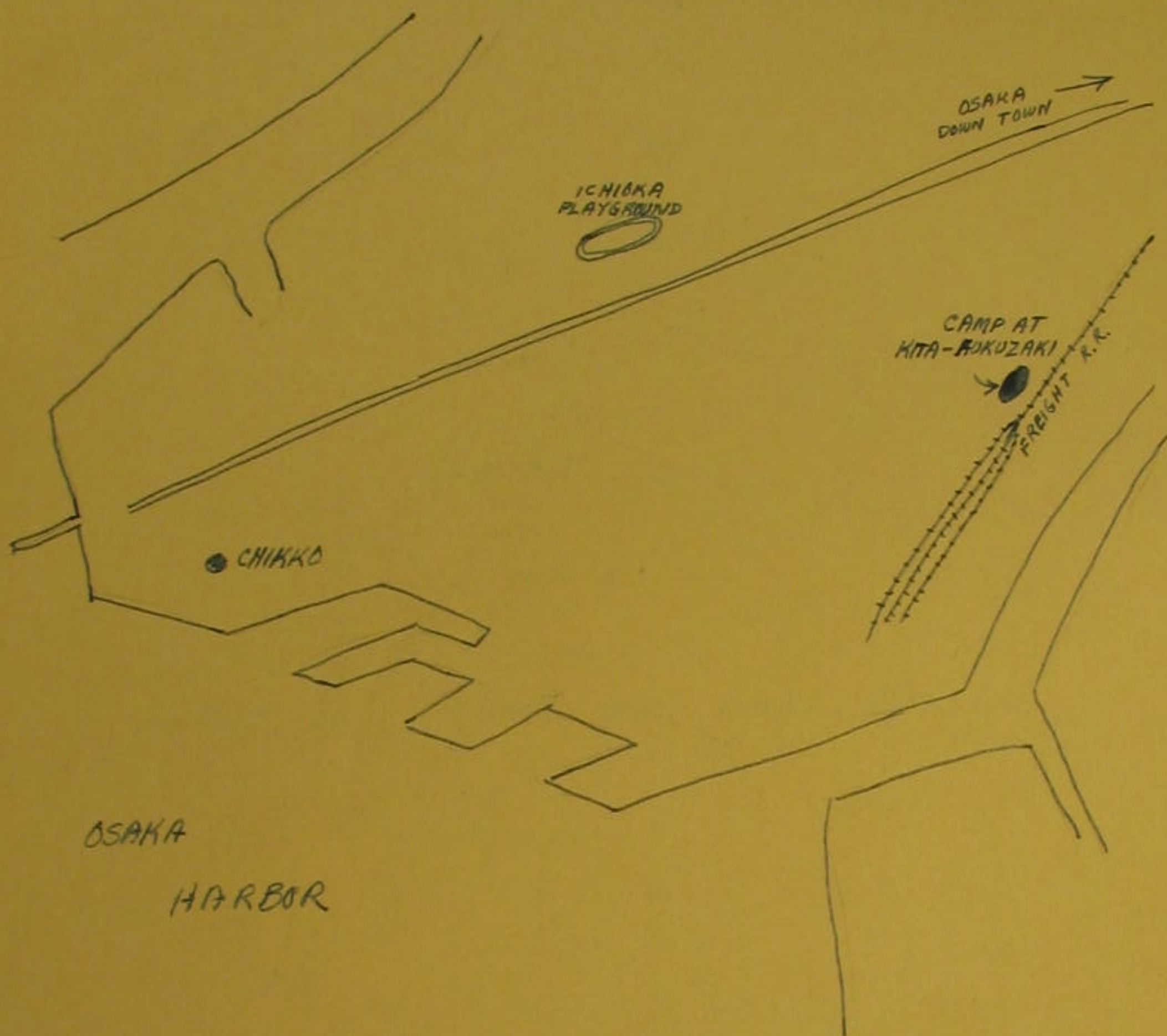


LIST OF PAPERS

File under No. MISCELLANEOUS CS-0

Serial Number	Subject	Date	Type of Document
1.	OSAKA, POW CAMP MANAGEMENT OF POW LABOR IN PRISONERS OF WAR CAMPS		
2.	List of Allied POW whose SIGNATURES APPEAR ON DEATH CERTIFICATE		
3.	CERTIFICATE OF DEATH		
4.	LIST OF RANKING ALLIED PRISONERS OF WAR (OFFICERS AND NON-COM) WHO WERE INTERNED IN POW CAMP IN HONSHU, Japan		
5.	LIST OF AUSTRALIAN Prisoners of War in OSAKA AREA.		
6.	LIST OF PRISONERS OF WAR AT CS-2		
7.	LIST OF PRISONERS OF WAR AT CS-5		
8.	LIST OF PRISONERS OF WAR AT CS-7		
9.	LIST OF PRISONERS OF WAR AT CS -8		
10.	LIST OF PRISONERS OF WAR AT CS-10		
11.	LIST OF PRISONERS OF WAR AT CS-11		
12.	LIST OF PRISONERS OF WAR AT CS -13		
13.	LIST OF PRISONERS OF WAR AT CS-15		
14.	LIST OF PRISONERS OF WAR AT CS-20		
15.	LIST OF PRISONERS OF WAR AT CS-22		
16.	LIST OF PRISONERS OF WAR AT CS-24		
17.	LIST OF PRISONERS OF WAR AT CS-24		
18.	LIST OF PRISONERS OF WAR AT CS-2		
19.	LIST OF PRISONERS OF WAR AT CS-5		
20.	LIST OF PRISONERS OF WAR AT CS-6		
21.	LIST OF PRISONERS OF WAR AT CS-7		
22.	LIST OF PRISONERS OF WAR AT CS-8		
23.	LIST OF PRISONERS OF WAR AT CS-10		
24.	LIST OF PRISONERS OF WAR AT CS-11		
25.	LIST OF PRISONERS OF WAR AT CS-13		
26.	LIST OF PRISONERS OF WAR AT CS -15		
27.	LIST OF PRISONERS OF WAR AT CS -20		
28.	LIST OF PRISONERS OF WAR AT CS #22		
29.	LIST OF PRISONERS OF WAR AT CS-24		
30.	Report on Osaka Main POW Camp.		
31.	Re Investigation of Osaka Main POW Camp.		
32.	Record of PW work at the Osaka PW Internment Camp, Sub Camp No. 2 and Detached Camps No. 1 and 2.		
33.	EXHIBIT "C", "C", "C"		
34.	Answers to Questionnaires from Legal Section		
35.	THE LIST OF PERSONNEL OF PRISONERS OF WAR.		
36.	The list of percentage of P.O.W. camp in Korea		

RESTRICTED



CERTIFICATE

I, James B. Ammon, 2d Lt., F.A., O-1185962, certify that the above map overlay shows the location of the Osaka Main Camp at Kita - Fukuzaki as it appeared on 11 February, 1946.

James B. Ammon
JAMES B. AMMON, 2D LT., F.A., O-1185962
INVESTIGATING OFFICER
LEGAL SECTION, GHQ, SCAP.

RESTRICTED

Table of Duties for the OSAKA PW Internment Camp, Sub-Camp (BUNSHO) No. 2 (in KOBE), Detached Camp (HAKENSHO) No. 1 (in HIROHATA), and Detached Camp (HAKENSHO) No. 7 (in HARIMA), based on Extracts (WB 9) of reports from the companies using PW's.

I certify this document to be a true extract from documents held by this office.

11 Oct 43.
Information Bureau, Administrative Official
YOKOI, Koji ().

Extracts from the files of companies in OSAKA that used PW's (WB 9).

HARIMA () Sub-Camp (BUNSHO).

29 Mar 46 - An extract from the report of the HARIMA Ship Yard Co. Ltd..

Report on the working conditions of detached PW's.

4. Duties.

A. Ship Building Department:

Fitting, apprentice work, iron work, carpentry, riveting, painting, saw milling, copper work, assembling.

B. Engine Manufacturing Department:

Machinery and boiler manufacturing, casting.

C. Electrical Department:

Electrical welding.

HIROHATA Sub-Camp (BUNSHO).

6 Mar 46 - An extract from the report of the NIPPON Iron Manufacturing Co. Ltd., concerning the HIROHATA Iron Foundry.

4. Duties of Detached PW's.

A. Automotive repair.

B. Construction work.

C. Manufacture of electrical equipment.

D. Civil engineering (line maintenance).

E. Stevedoring.

F. Miscellaneous services within the internment camp.

KOBE Sub-Camp (BUNSHO).

21 Apr 46 - An extract from the report of the SHOWA Electrode Co. Ltd..

4. Types of Duties.

Distribution, crane operation, conveyance of raw materials, preparing furnaces and burning, lathe operation (finishing and repairing), electrical repair, and miscellaneous work. (Principally the conveyance of manufactured goods and raw materials by truck).

26 Mar 46 - An extract from the report of the NISHINOMIYA ()
Factory of the YOSHIWARA () Oil Refining Co. Ltd..

4. Duties of PW's.

Relative to construction (drafting, lathe work, and help with repairs). Other work (loading, conveyance, and part of the operation of oil refining.

26 Mar 46 - An extract from the report of the NIPPON Transportation
Co. Ltd., KOBE Harbor Branch Office.

4. Duties of detached PW's.

Loading and unloading freight trucks and other unloading work.

27 Mar 46 - An extract from the report of the NIPPON Transportation
Co. Ltd., MINATOGAWA () Branch Office.

4. Duties of the detached PW's.

Loading and unloading of various goods from freight trucks arriving and departing from the station.

12 Apr 46 - An extract from the report of the KAWANISHI ()
Warehouse Co. Ltd..

4. Duties.

Conveyance of goods.

15 Apr 43 - An extract from the report of the TAKADORI ()
Machine Shop of the OSAKA Railway Bureau.

The repair of railway vehicles.
(locomotives, freight cars, and automobiles) Principally dismantling work.

Table of Varicous Duties from October 1942 to June 1945.

Month	Detached Camp No. 7 (Sub-Camp No. 6) HARIMA	Sub-Camp No. 2 (Sub-Camp No. 1) KOBE	Detached Camp No. 1 (Sub-Camp No. 12) HIROHATA
October 1942		Loading and unloading freight cars.	Hauling minerals and coal.
November		Unloading rubber from lighters and storing; loading sugar on ships; loading miscellaneous goods on freight cars; hauling oil; operating cranes; loading various goods on ships; loading rocks and soy beans on freight cars; hauling coal.	Same as previous month.
December	Ship construction; utility work.	Same as previous month.	Same as previous month.
January 1943	Utility work in each construction section.	Hauling miscellaneous goods; loading and unloading freight cars; utility work.	Hauling miscellaneous goods and coal; loading and unloading ships.
February	Same as previous month.	Finishing electrodes; polishing steel materials; hauling miscellaneous goods; loading and unloading lighters and freight cars; also, utility work.	Unloading coal.
March	Ship and machinery construction; work within the camp.	Same as previous month.	Unloading coal; work within the camp.
April	Same as previous month.	Hauling manufactured goods and raw materials; miscellaneous work; crane operation; loading and unloading freight cars; unloading from ships; hauling and storing freights; duties in the camp (sanitation, cooking, sewing and clerical duties).	Unloading coal and iron from ships; duties in the camp (sanitation, cooking, sewing, and clerical duties).
May	Same as previous month.	Same as previous month.	Same as previous month.

June	Same as previous month.	Same as previous month.	Same as previous month.
July 1943	Same as previous month.	Same as previous month.	Same as previous month.
August	Same as previous month.	Loading and unloading freight cars; loading and unloading lighters; loading and unloading raw cotton and anchors from ships; hauling refined oil, steel, and raw material for electrodes and the finished products; crane operations; and duties within the camp.	Unloading coal and ore from ships and reclamation of land.
September	Ship and machinery construction; transportation; duties within the camp.	In addition to the duties of the previous month, scraping sand from cast iron goods; electrical work; lathe turning.	Same as previous month.
October	Same as previous month, plus other constructional work.	Same as previous month.	Same as previous month.
November 1943 November 1944	Same as previous month.	Same as previous month.	Same as previous month.
December 1944	In addition to duties of previous month, work such as reclaiming waste materials and making envelopes was done at the Army Clothing Branch Depot, KOBE Branch Office.	Same as previous month.	Same as previous month.
January 1945 April 1945	Same as previous month.	Same as previous month.	Same as previous month.
May and June 1945	The monthly reports were received but there were no labor conditions charts included. Moreover, the reports for July and the following months have not been received.		

GENERAL HEADQUARTERS
SUPREME COMMANDER FOR THE ALLIED POWERS
LEGAL SECTION
INVESTIGATION DIVISION

12 February 1946

MEMORANDUM:

SUBJECT : Re Investigation of Osaka Main POW Camp.

By direction of the Chief, Investigation Division, Lt. S Walters and Lt. J B Ammon, accompanied by T/4 Toda, as interpreter, proceeded to Osaka and made an investigation of the Main POW Camp there.

(The report to supply information for the prosecution of War Criminals)

History of the Osaka Main Camp - 21 September 1942 the Osaka Main Camp was established at Chikko. The POWs remained at Chikko until 1 June 1945, when the camp was bombed out. They moved to Tsumori Camp (the description and report on this camp was given in a previous report). Tsumori was considered to be in an unsafe location, so the POWs were transferred to Kita-Fukuzaki. On the 10th of July 1945 the main office was separated from the Camp. The Camp was then called Osaka Camp 1st branch. The main office was moved to Shimo Shinden, Shinden-mura, Mishima-gun which is about five miles north-east of Osaka. Chikko, Tsumori and Kita-Fukuzaki are all in the city of Osaka.

1. Location: see enclosed exhibits for exact location of these camps.

Military Objectives - all three locations of this camp were situated along the Osaka waterfront and in the midst of vital military objectives. Both Tsumori and Chikko were bombed and burned completely and Kita Fukuzaki was damaged.

2. Description: The camp at Chikko was bombed and burned flat, and only the foundations of the buildings remain. The camp consisted of several wooden buildings covered with a mud stucco. Overall dimensions of the camp were 23-' x 130'.

POW quarters consisted of two one story barracks, each 72' x 33' in size. These two barracks had triple-decker bunks. A third building 72' x 30' was of two story construction. A space on the first floor 30' x 24' was used solely as a sick ward. The second floor contained POW quarters. A fourth building 64' x 30' quartered POWs on the second floor only.

The kitchen was 30' x 30' and had eight brick stoves. There was a cement bath 10' x 10' and ten showers. The dispensary was a room 21' square and next to it was the guard house and one cell. The remaining space were the Japanese quarters, kitchen, dining room and latrine.

For air raid protection, there was one shelter in the middle of the camp 45 ft. long and 12 ft wide and five small shelters around the outside of the camp. Each of these was 15 ft long and four ft. wide. This was not adequate for the number of POWs held.

On 2 June 1945 the POWs were transferred to Tsumori Cp. (this camp had already been covered in a previous report). On 10 July 1945 they were again transferred to 7 Nishino-sho, Kita-Fukuzaki, Minato Ku in Osaka. Here they were quartered in three

rooms on the second floor of a large warehouse. Each room was 55' long and 40' wide with cement floor and cement walls, with a low-ceiling only about 5 feet high in some places. On the first floor of the warehouse was the guard house, 15'x15', the dispensary 15'x15' and the sick ward, 30' x 15'.

Outside the warehouse was the kitchen, a wooden building built by the POWs. It contained 4 brick stoves and 1 brick oven. Next to the kitchen was a large cement water tank for fire fighting. The latrine was a wooden structure built by the Prisoners and consisted of 2 urinals and 16 toilets. This location of the camp was not nearly adequate for the number of Prisoners. Sleeping quarters were very cramped and no shelves or tables were provided, the pws slept on mats thrown on the cement floor. The latrine and kitchen facilities were very poor and no sanitary conveniences were provided. The PWS remained here until the end of the war.

3. Utilization: The Osaka Camp was established to provide workers for the docks and stevedoring cos. of Osaka Port.

Clothing : The Prisoners had their own clothing plus Jap uniforms. Their shoes were either their own or Jap army shoes, some PWS were issued the rubber soled sneakers. The Prisoners operated a shoe repair shop in the camp.

4. Prisoner of War Personnel: the Prisoners arrived on 11 October 1942 they were British from Hong Kong and were 500 in number. They came from Hong Kong on the Lisbon.

5. Guards: for a complete roster of the Japanese Army Personnel at this camp see the attached Exhibit. - *No ROSTER ATTACHED* JP

6. Work: All the prisoners from the camp worked for various transportation and stevedoring cos of Osaka Port. They loaded and unloaded ships, transported materials, worked in warehouses and loaded and unloaded railroad cars at the docks. They worked on all kinds of goods, usually foodstuff and clothing. Some military equipment consigned to Jap armies in the So. ~~East~~ Pacific.

Working hours- 0800 started work
1200 - 1300 lunch
1600 - quit.

During the day they got breaks depending on the job they were doing.

Some of the working places were close to the camp others farther away. At Tsumori the POW's were ferried to the docks to works. At Kita-Fukuzaki, they were transported by street car or bus to the dock area.

Pay: 1 yen per day of which the PW recd 20 sen.

Red Cross: During the entire time the camp was open the Prisoners only recd one-third of a red cross package. (No facts were obtained on what became of the rest of them).

7. Food: a sample days rations as follows:

Breakfast- Rice and Soup
Lunch (carried by the PWS to work)
Rice, sometimes bread, seaweed.

Dinner - Rice and soup, fish every 10 days, meat once or twice a month; vegetables (One kind each night) onions, potatoes, radish, cabbage or eggplant.

8. Medical: The medical staff consisted of: 2 Jap drs., 2 PW drs., 1 PW Dentist, 10 Jap medics, 5 PW medics.

The medical supplies were furnished by the army. An average of 70 men per day could not go to work because of sickness: 15 beri-beri, 10 skin diseases, 15 dysentery and 30 from colds and pneumonia. (these average figures given us by a Jap army doctor of the camp)

25 men died at this camp. 10 from pneumonia and 15 from beri-beri. Some of the worst cases were removed to Ichioka Hospital just before they died. Some of these deaths were due to the weakened condition the Prisoners were in when they arrived in Japan.

CA-14

9. Sanitation: See 2 above (Not able to see much on this because of the bombed condition of the camp)

10. Air Raid Protection: See 2 above (the roofs of the buildings were not painted until the war was over)

11. Punishment: No evidence of any beatings taking place at this camp.

12. Conclusions: a total of nine former Jap guards at this camp were interrogated but no evidence of any atrocities was uncovered.

By direction of the Staff, Investigation Division, Lt. J. Walters and Lt. J. E. Ammon, accompanied by T/A J. J. J., an interpreter, proceeded to Osaka and made an investigation of the Osaka POW Camp.

(The report is hereby certified as true and correct.)

CERTIFICATE

History of the Osaka Main Camp - On September 11, 1945 the Osaka Main Camp was established at Osaka, Japan.

We, James B Ammon, 2d Lt., O-1185962 and Samuel E Walters, 2d Lt O-1332112 certify that the above facts are as we saw or as were told to us during our investigation of the Osaka Main Prisoner of War Camp. This investigation took place 11 - 12 February 1946.

Osaka, Honshu, Japan

12 Feb 1946

James B Ammon
 JAMES B AMMON
 2d Lt O-1185962
 Investigating Officer
 Legal Section GHQ SCAP

Samuel E Walters
 SAMUEL E WALTERS
 2d Lt O-1332112
 Investigating Officer
 Legal Section GHQ SCAP

1. Description: The camp at Osaka was a rectangular compound with the foundations of the buildings of several wooden buildings covered with a thin layer of snow. Dimensions of the camp were 23-2 x 130'.

POW quarters consisted of two sets of buildings, one 70' x 30' in size. These two barracks had triple-decker bunks. A third building 70' x 30' was of two story construction. A room on the first floor 30' x 30' was used as a dining room. The second floor contained POW quarters. A fourth building 20' x 30' quarters were on the second floor only.

The kitchen was 30' x 30' and had a large stove. There was a cement bath 10' x 10' and two showers. The dining room was 30' x 30' square and open to it was the guard house for the camp. The remaining space was the Japanese quarters, latrine, dining room and kitchen.

For air raid protection there was a wall in the middle of the camp 15' high and 12' wide and five small watch towers around the outside of the camp. Each of these was 12' x 12' and 12' high. This was not adequate for the number of POWs held.

On 7 June 1945 the POWs were transferred to Camp 1. This camp had already been covered in a previous report. On 10 July 1945 they were again transferred to 2 Camp, Osaka, Honshu, Japan. They were quartered in 1000

141

OSAKA MAIN CAMP AT KITA - FUKUZAKI

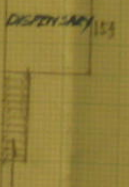
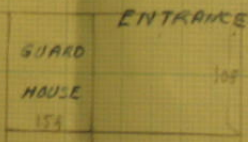
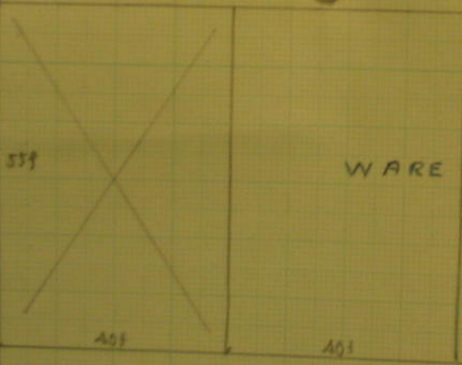
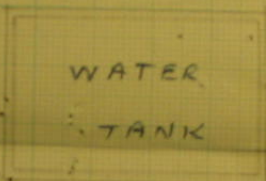
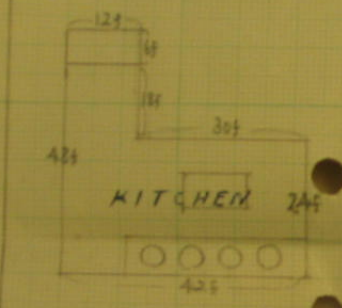
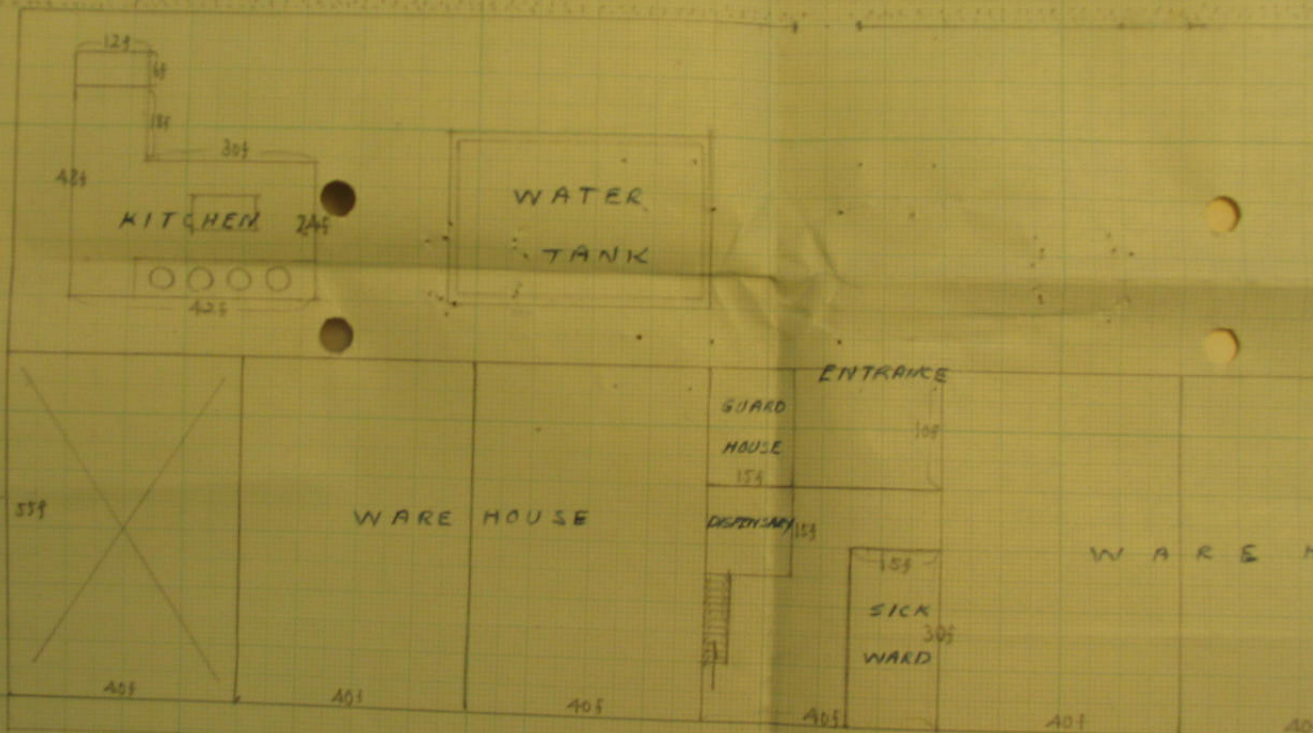
(FIRST FLOOR PLAN)

* ALL MEASUREMENTS IN FEET

R O A D



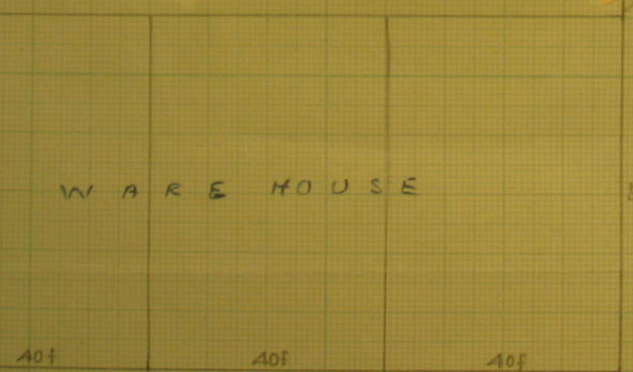
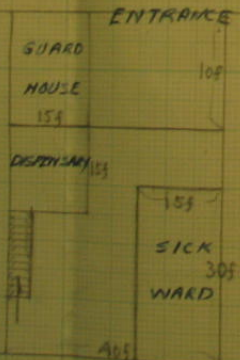
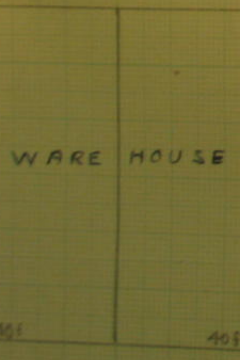
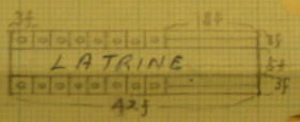
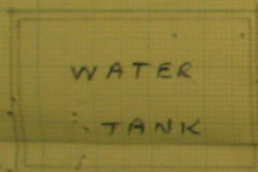
R O A D



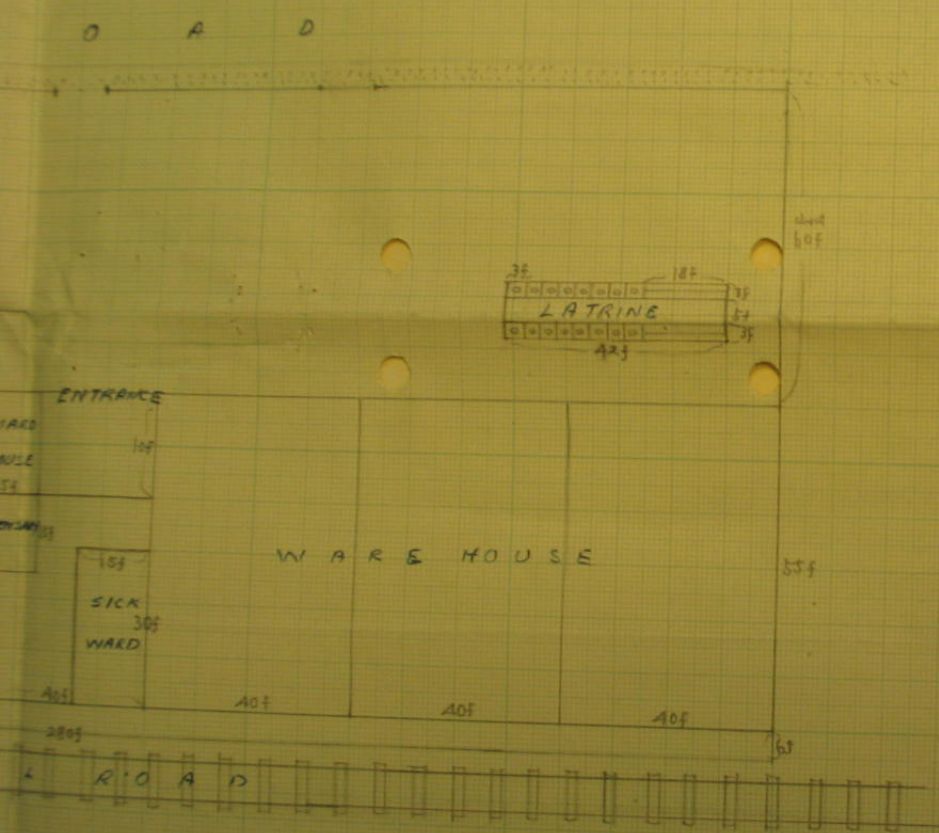
WARE HOUSE

2805
RAILROAD

R O A D

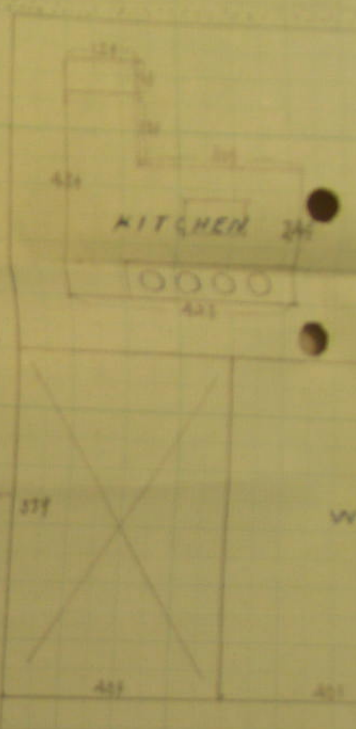
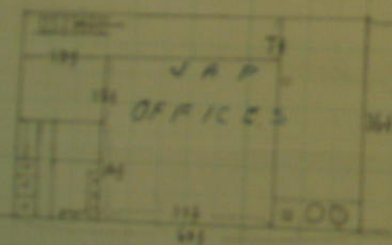


R A I L R O A D

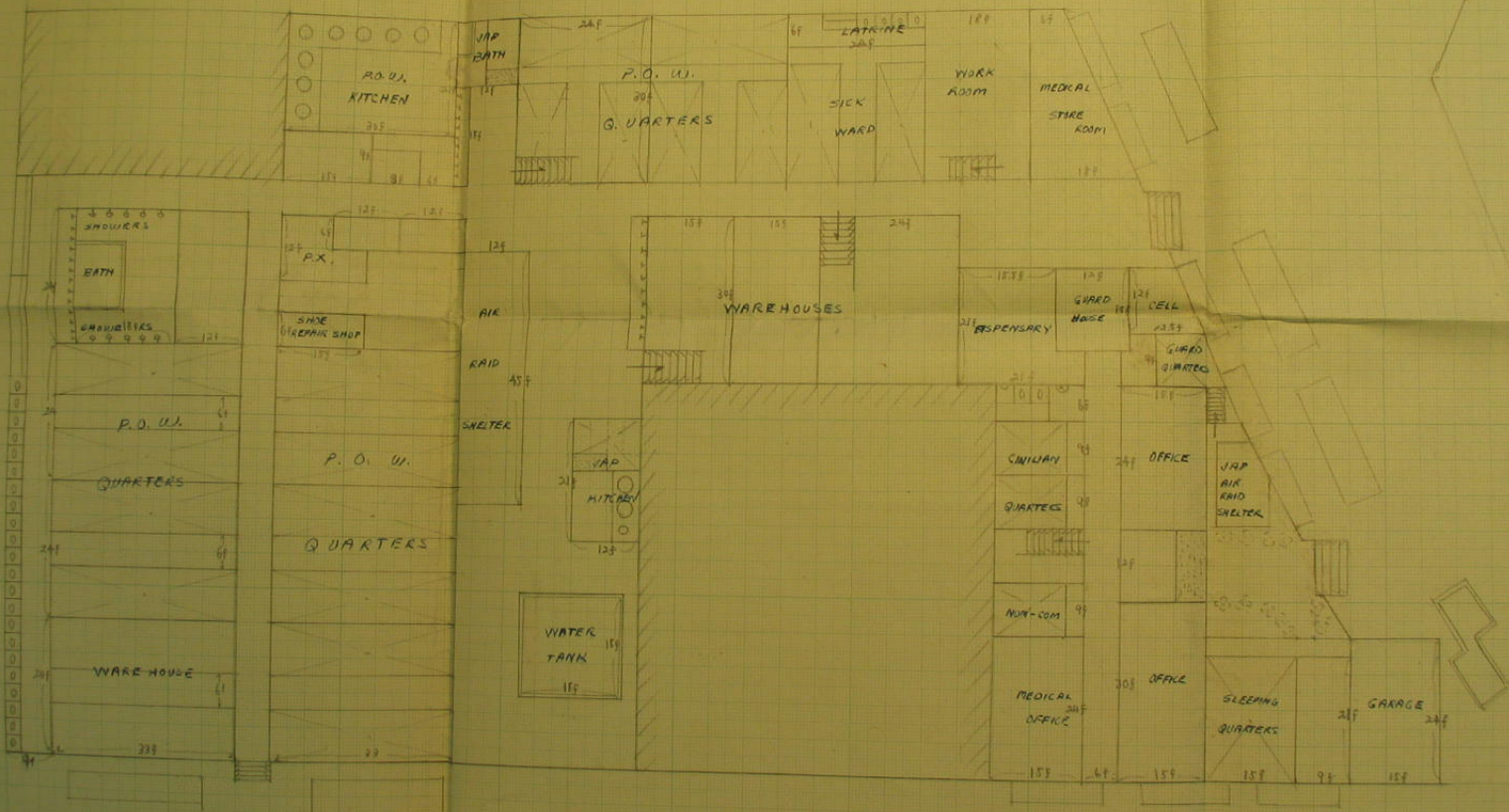


Doc. No. 23953
 Doc. No. 23953
 Detached Camp No. 7
 October 1942
 Month
 October 1942
 October



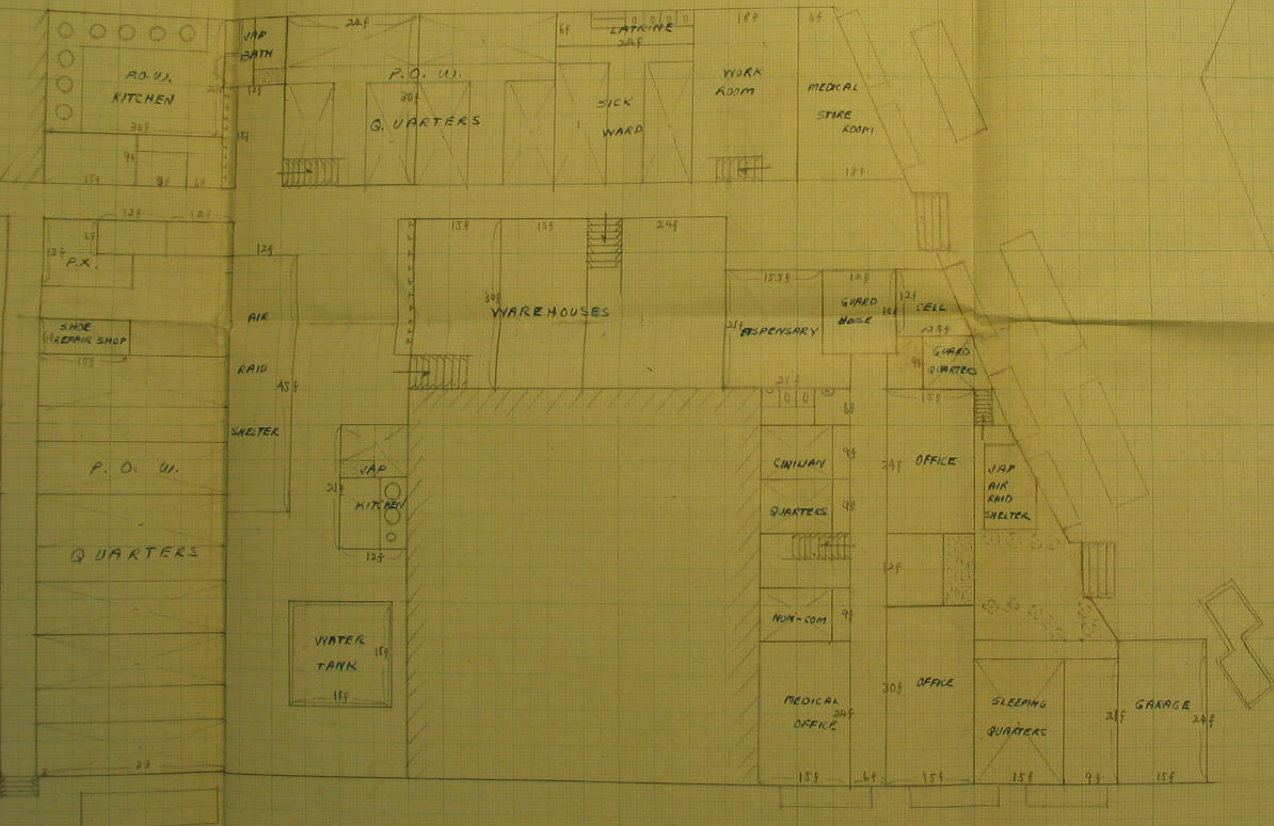


* ALL MEASUREMENTS IN FEET

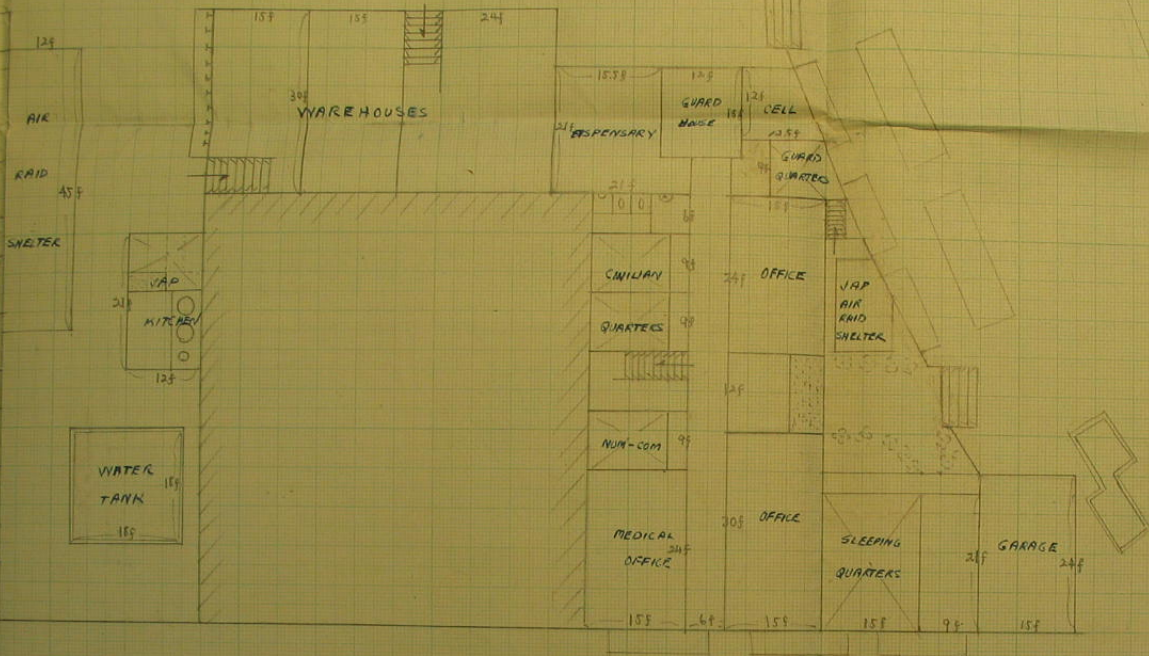


(FIRST FLOOR PLAN)

* ALL MEASUREMENTS IN FEET



20f



S. J. ...

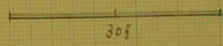
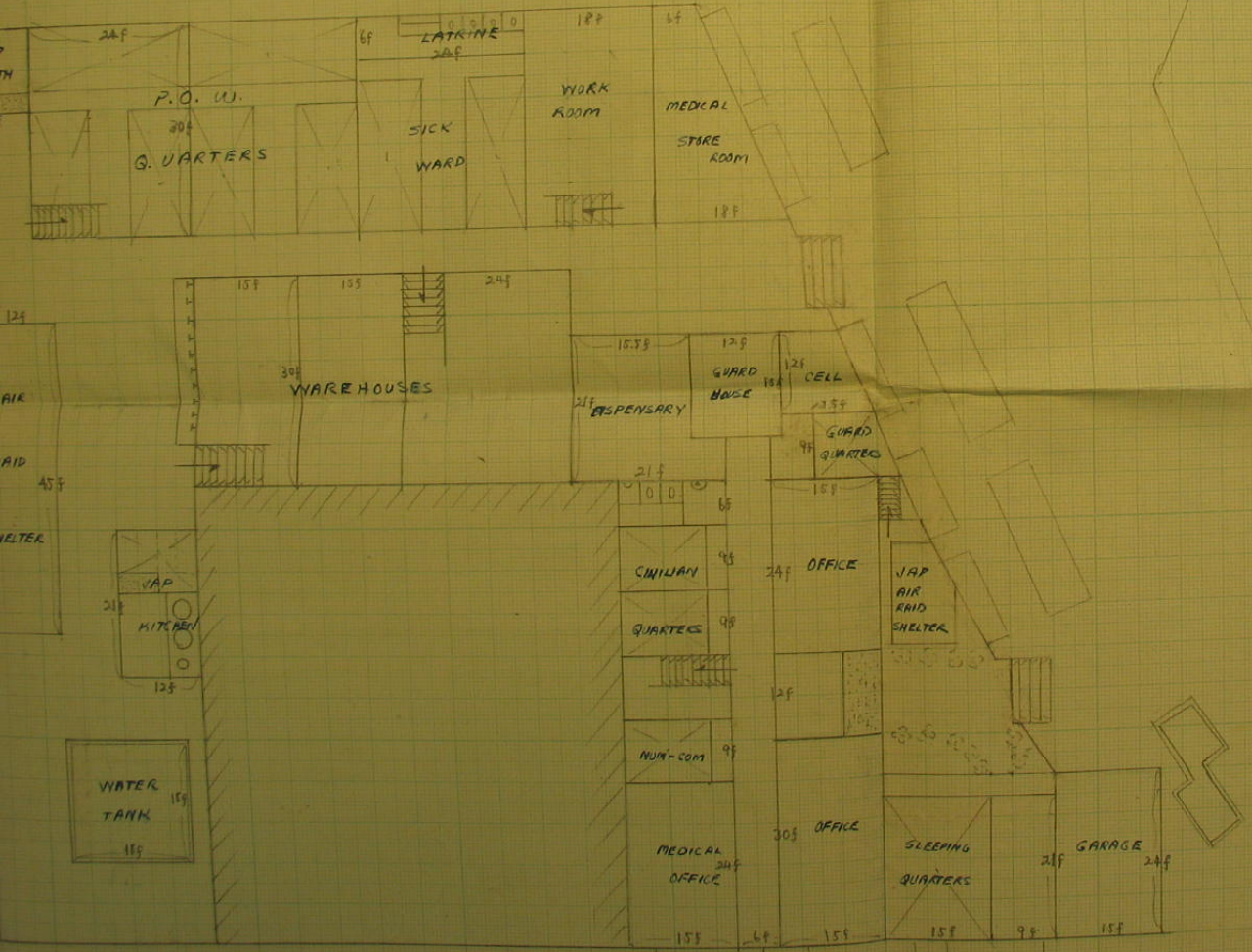


305

A. S. Szymanski

(FIRST FLOOR)

* ALL MEASUREMENTS IN FEET



(FIRST FLOOR PLAN)

* ALL MEASUREMENTS IN FEET

